

TECHNICAL MANUAL

ORGANIZATIONAL, DIRECT SUPPORT, AND

GENERAL SUPPORT

MAINTENANCE REPAIR PARTS AND

SPECIAL TOOLS LIST

(INCLUDING DEPOT MAINTENANCE REPAIR

PARTS AND SPECIAL TOOLS)

FOR

SIGNAL GENERATOR SG-944/U,

HP620B

(NSN 6625-00-107-8173)

HEADQUARTERS, DEPARTMENT OF THE ARMY

1 MARCH 1982

TECHNICAL MANUAL }
No. 11-6625-2520-24P-1 }

HEADQUARTERS
DEPARTMENT OF THE ARMY
WASHINGTON, DC, 1 March, 1982

**ORGANIZATIONAL, DIRECT SUPPORT, AND
GENERAL SUPPORT
MAINTENANCE REPAIR PARTS AND
SPECIAL TOOLS LIST
(INCLUDING DEPOT MAINTENANCE REPAIR
PARTS AND SPECIAL TOOLS)
FOR
SIGNAL GENERATOR SG-944/U, HP620B
(NSN 6625-00-107-8173)**

Current as of 16 November 1981

REPORTING ERRORS AND RECOMMENDING IMPROVEMENTS
You can help improve this manual. If you find any mistakes or if you know of a way to improve the procedures, please let us know. Mail your letter, DA Form 2028 (Recommended Changes to Publications and Blank Forms), or DA Form 20282 located in back of this manual direct to: Commander, US Army Communications-Electronics Command, ATTN: DRSEL-ME-MQ, Fort Monmouth, NJ 07703.
In either case, a reply will be furnished direct to you.

Table of Contents

		Page	Illus Figure
SECTION	I. Introduction	1	
	II. Repair Parts List	5	
GROUP	00 Signal Generator SG-944/U, HP620B	5	1
	01 Circuit Card Assembly, 300VPS, A300.....	11	2
	02 Circuit Card Assembly, 1000VPS, A400.....	13	3
	03 Circuit Card Assembly, 1550VPS, A500.....	15	4
	04 Circuit Card Assembly, Power Monitor Amplifier, A600.....	17	5
	05 Circuit Card Assembly, Klystron Modulator, A700.....	19	6
	06 Circuit Card Assembly, Interconnection, A800	21	7
SECTION	III. Special Tools List (Not applicable)		
IV.	National Stock Number and Part Number Index.....	22	

*This manual supersedes TM 11-6625-2520-24P-1, 20 December 1978.

SECTION I

INTRODUCTION

1. Scope

This manual lists spares and repair parts; special tools; special test, measurement, and diagnostic equipment (TMDE), and other special support equipment required for performance of organizational, direct support, and general support maintenance of the SG-944/U, HP620B. It authorizes the requisitioning and issue of spares and repairs parts as indicated by the source and maintenance codes.

2. General

This Repair Parts and Special Tools List is divided into the following sections:

a. Section II. Repair Parts List. A list of spares and repair parts authorized for use in the performance of maintenance. The list also includes parts which must be removed for replacement of the authorized parts. Parts lists are composed of functional groups in numeric sequence, with the parts in each group listed in figure and item number sequence.

b. Section III. Special Tools List. Not applicable.

c. Section IV. National Stock Number and Part Number Index. A list, in National item identification number (NIIN) sequence, of all National stock numbers (NSN) appearing in the listings, followed by a list, in alphanumeric sequence, of all part numbers appearing in the listings. National stock numbers and part numbers are cross-referenced to each illustration figure and item number appearance.

3. Explanation of Columns

a Illustration. This column is divided as follows:

(1) Figure number. Indicates the figure number of the illustration on which the item is shown.

(2) Item number. The number used to identify item called out in the illustration.

b. Source, Maintenance, and Recoverability (SMR) Codes.

(1) *Source code.* Source codes indicate the manner of acquiring support items for maintenance, repair, or overhaul of end items. Source codes are entered in the first and second positions of the Uniform SMR Code format as follows:

Code

Definition

PA—Item procured and stocked for anticipated or known usage.

XD—A support item that is not stocked. When required, item will be procured through normal supply channels.

NOTE

Cannibalization or salvage may be used as a source of supply for any items source coded above except those coded XA and aircraft support items as restricted by AR 700-42.

(2) *Maintenance code.* Maintenance codes are assigned to indicate the levels of maintenance authorized to USE and REPAIR support items. The maintenance codes are entered in the third and fourth positions of the Uniform SMR Code format as follows:

(a) The maintenance code entered in the third position will indicate the lowest maintenance level authorized to remove, replace, and use the support item. The maintenance code entered in the third position will indicate one of the following levels of maintenance:

Code

Application/Explanation

O—Support item is removed, replaced, used at the organizational level.

H—Support item is removed, replaced, used at the general support level.

(b) The maintenance code entered in the fourth position indicates whether the item is to be repaired and identifies the lowest maintenance level with the capability to perform complete repair (i.e., all authorized maintenance functions). This position will contain one of the following maintenance codes:

Code

Application/Explanation

H—The lowest maintenance level capable of complete repair of the support item is the general support level.

Z—Nonreparable. No repair is authorized.

(3) *Recoverability code.* Recoverability codes are assigned to support items to indicate the disposition action on unserviceable items. The recoverability code is entered in the fifth position of the Uniform SMR Code format as follows:

Recoverability

codes

Definition

Z—Nonreparable item. When unserviceable, condemn and dispose at the level indicated in position 3.
 H—Reparable item. When uneconomically reparable, condemn and dispose at the general support level.

c. National Stock Number. Indicates the National stock number assigned to the item and will be used for requisitioning purposes.

d. Federal Supply Code for Manufacturer (FSCM). The FSCM is a 5-digit numeric code listed in SB 708-41/42 which is used to identify the manufacturer, distributor, or Government agency, etc.

e. Part Number. Indicates the primary number used by the manufacturer (individual, company, firm, corporation, or Government activity), which controls the design and characteristics of the item by means of its engineering drawings, specifications, standards, and inspection requirements to identify an item or range of items.

NOTE

When a stock numbered item is requisitioned, the repair part received may have a different part number than the part being replaced.

f. Description. Indicates the Federal item name and, if required, a minimum description to identify the item.

g. Unit of Measure (U/M). Indicates the standard of the basic quantity of the listed item as used in performing the actual maintenance function. This measure is expressed by a two-character alphabetical abbreviation (e.g., ea., in, pr, etc.). When the unit of measure differs from the unit of issue, the lowest unit of issue that will satisfy the required units of measure will be requisitioned.

h. Quantity Incorporated in Unit. Indicates the quantity of the item used in the breakout shown on the illustration figure, which is prepared for a functional group, subfunctional group, or an assembly.

4. Special Information

The following publications pertain to the SG-944/U, HP620B and its components:

- TM 11-4940-476-14, Electronics Shop, Semi-Trailer Mounted AN/ALM- 153.
- TM 11-4940-476-24P, Electronics Shop, Semi-Trailer Mounted ANIALM-153.

5. How to Locate Repair Parts

a. When National stock number or part number is unknown.

(1) *First.* Using the table of contents, determine the functional group within which the item belongs. This is necessary since illustrations are prepared for functional groups and listings are divided into the same groups.

(2) *Second.* Find the illustration covering the functional group to which the item belongs.

(3) *Third.* Identify the item on the illustration and note the illustration figure and item number of the item.

(4) *Fourth.* Using the Repair Parts Listing, find the figure and item number noted on the illustration.

b. When National stock number or part number is known.

(1) *First.* Using the Index of National Stock Numbers and Part Numbers, find the pertinent National stock number or part number. This index is in NIIN sequence followed by a list of part numbers in alphanumeric sequence, cross-referenced to the illustration figure number and item number.

(2) *Second.* After finding the figure and item number, locate the figure and item number in the repair parts list.

6. Abbreviations

Not applicable.

(Next printed page is 4)

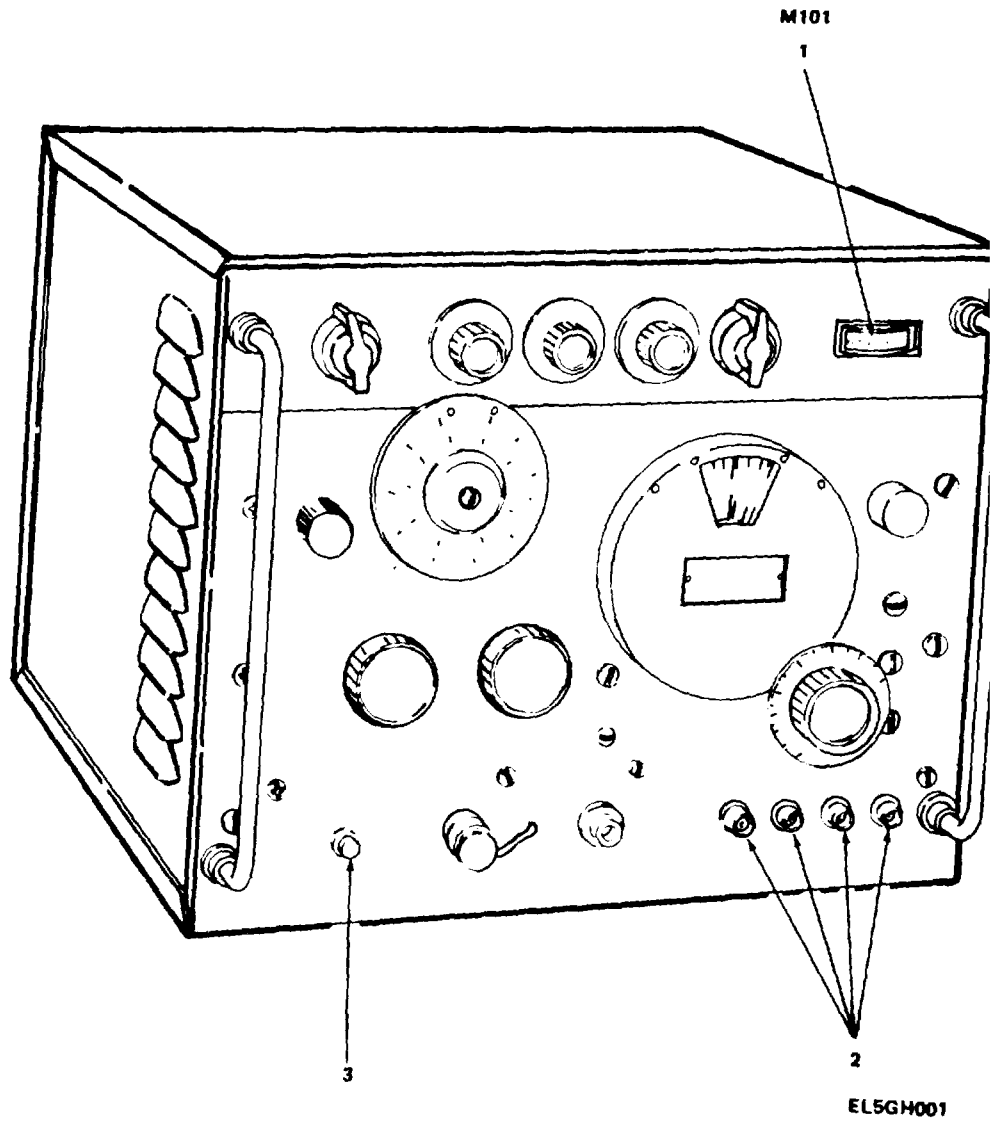
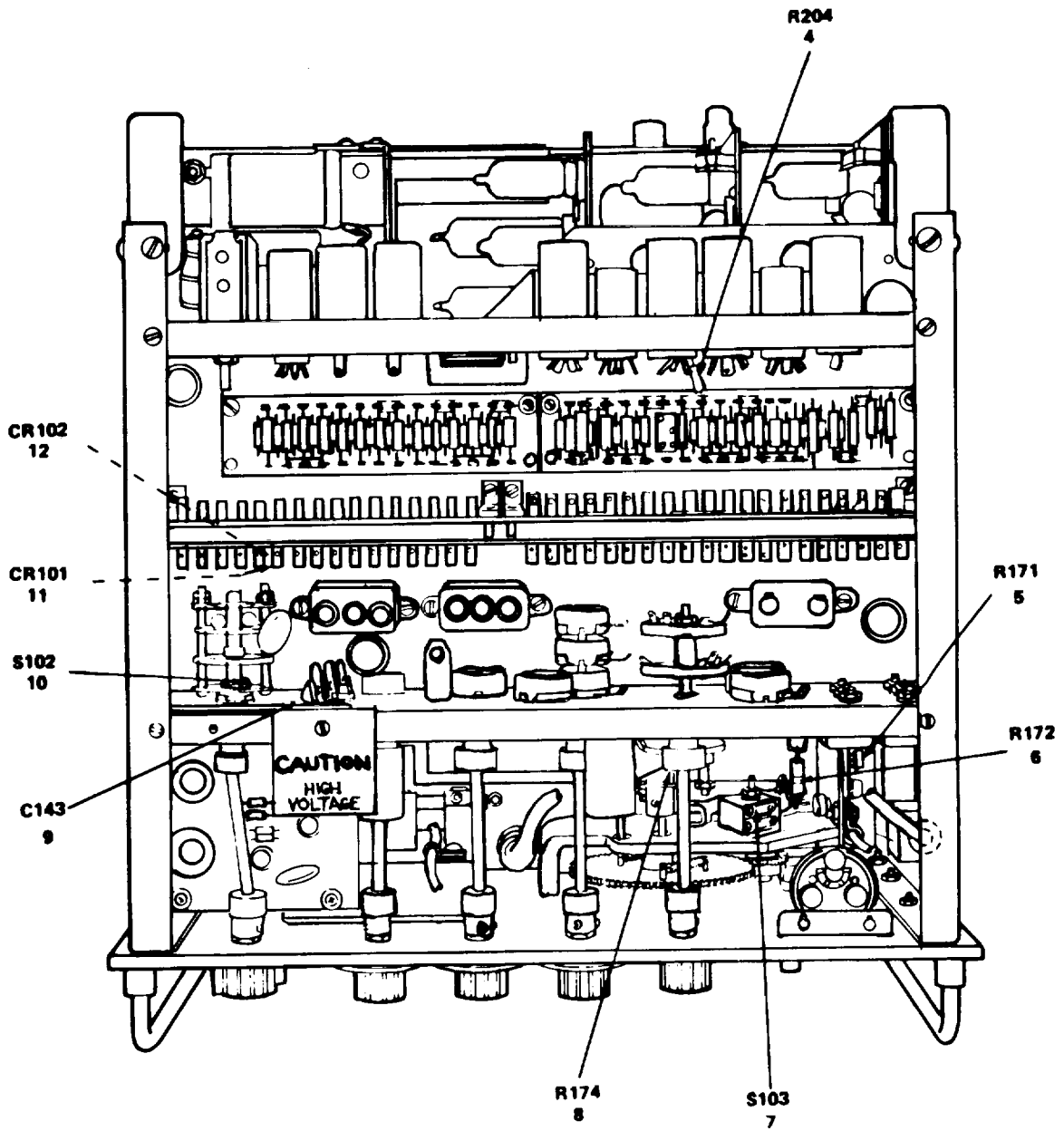


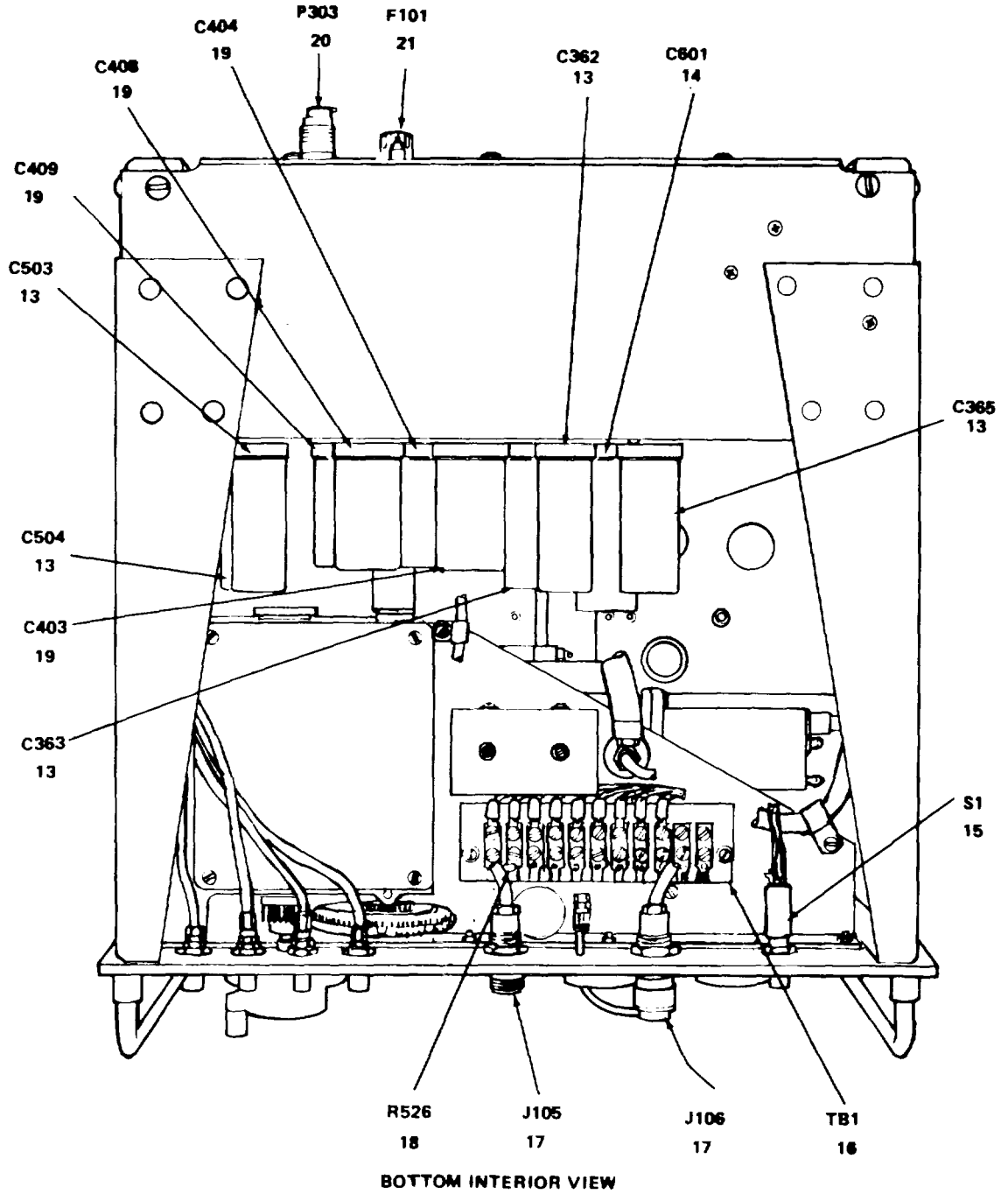
Figure 1. Signal Generator SG-944/U, HP620B (Sheer 1 of 15).



EL5GH002

TOP INTERIOR VIEW

Figure 1. Signal Generator SG-944/U, HP620B (Sheet 2 of 15).



EL5GH003

Figure 1. Signal Generator SG-944/U, HP620B (Sheet 3 of 15).

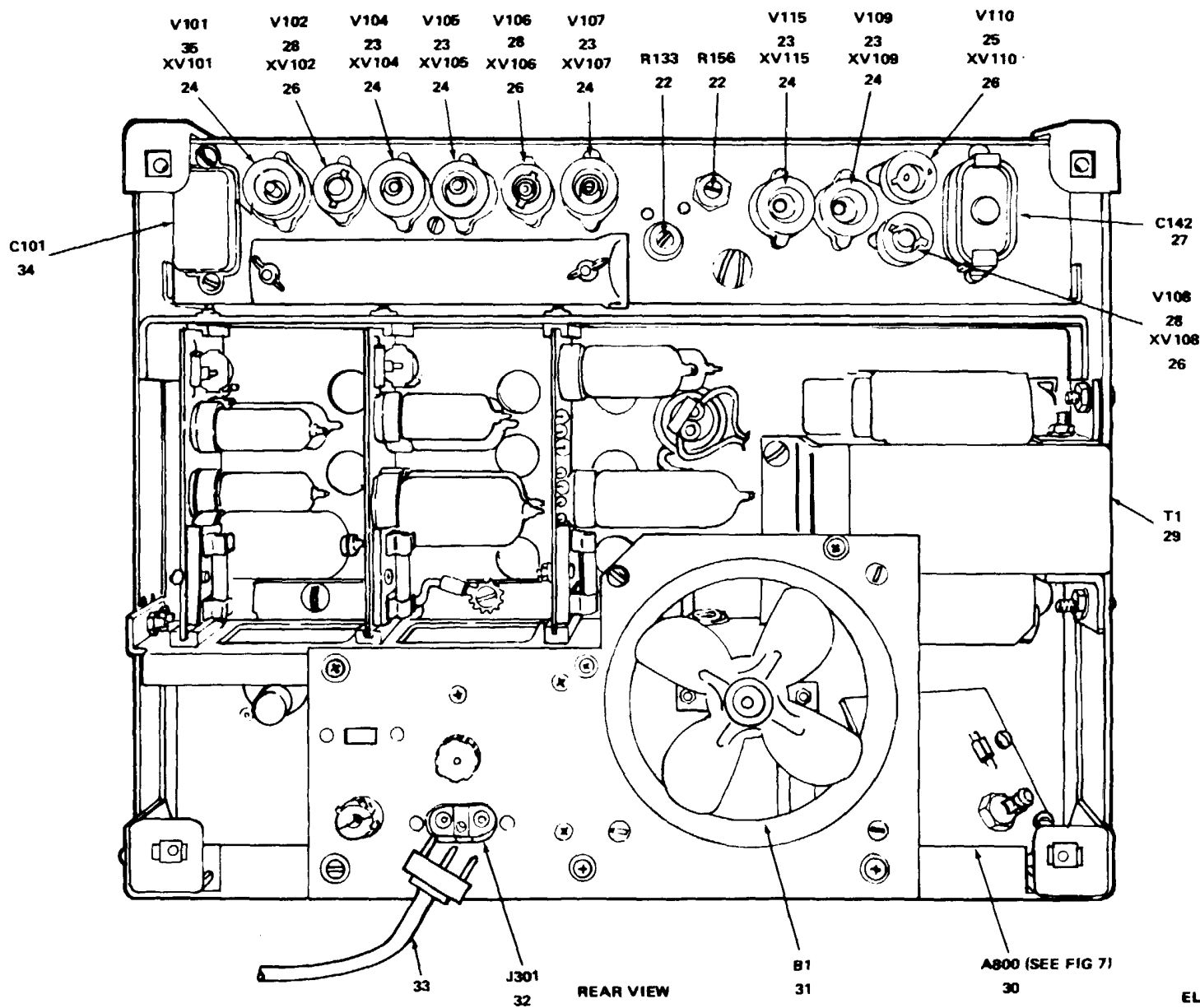


Figure 1. Signal Generator SG-944/U, HP620B (Sheet 4 of 15).

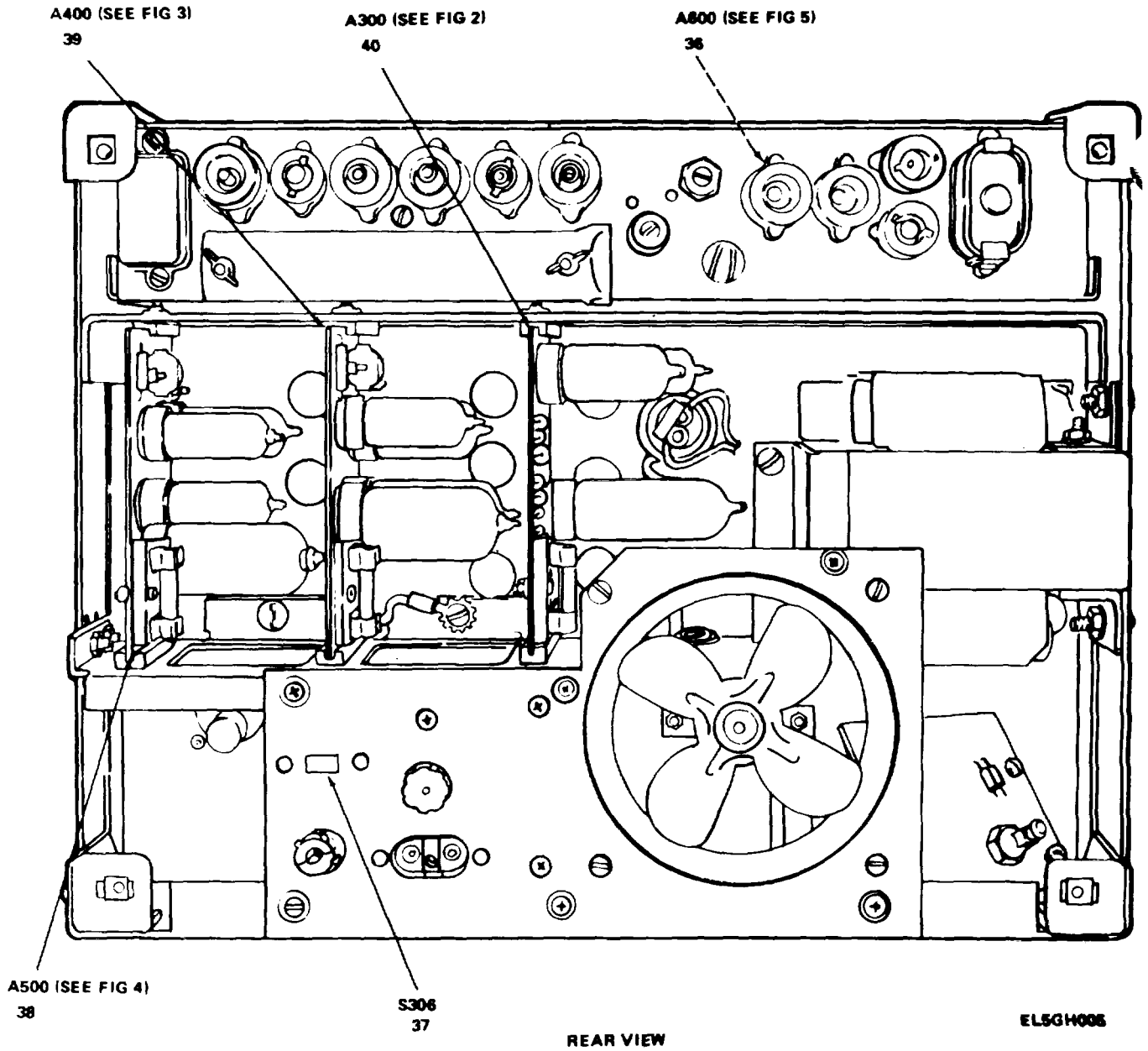


Figure 1. Signal Generator SG-94/U, HP620B (Sheet 5 of 15).

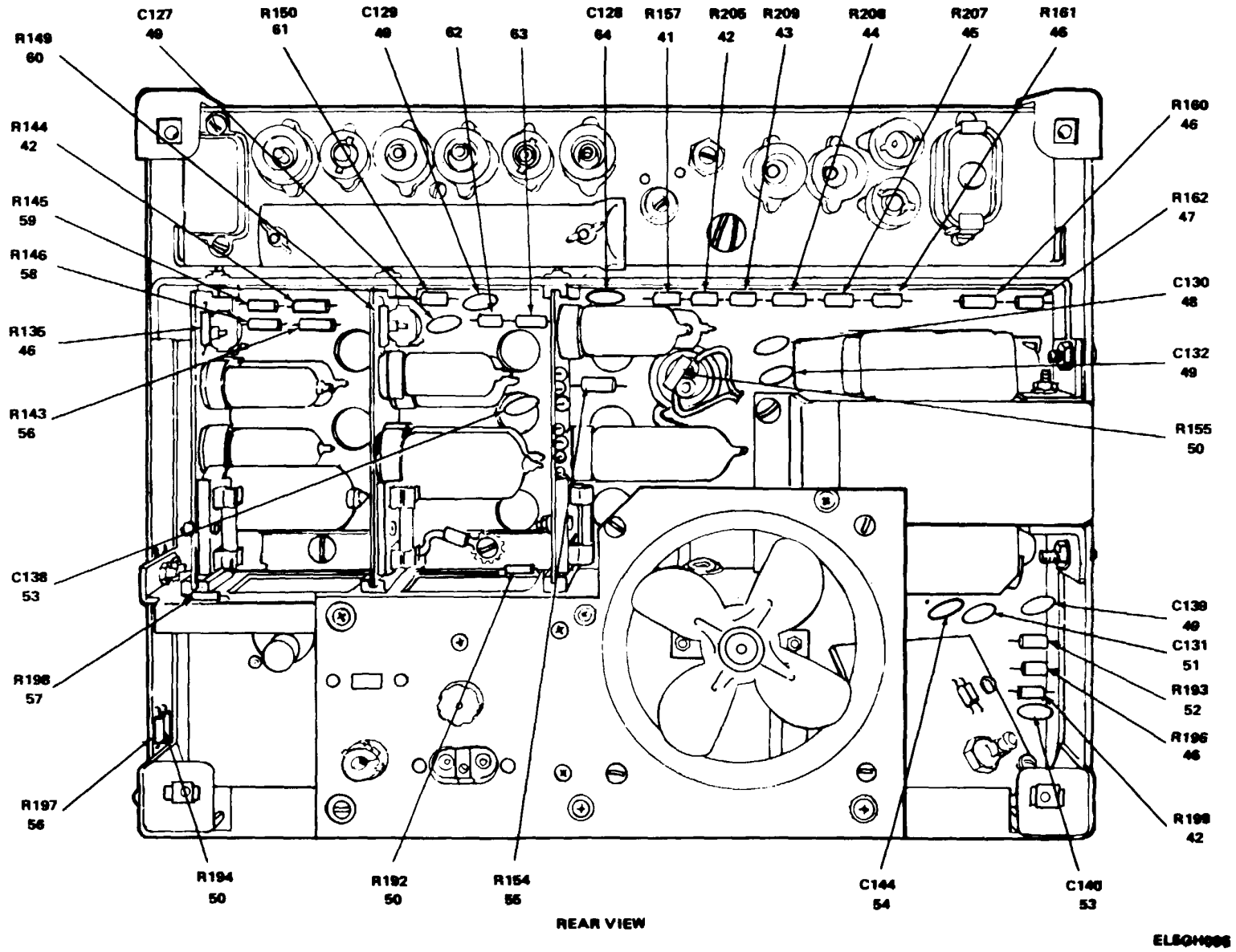
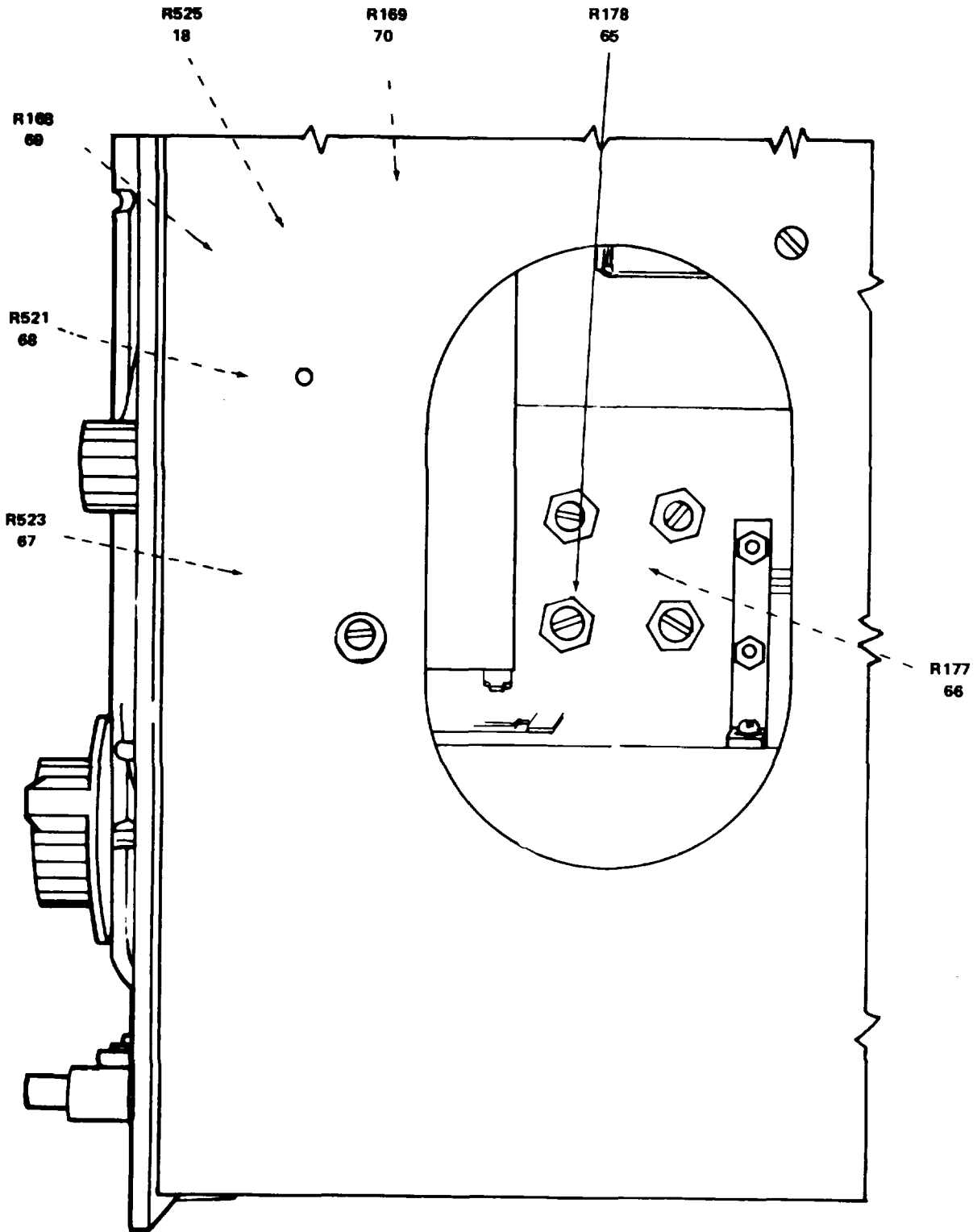


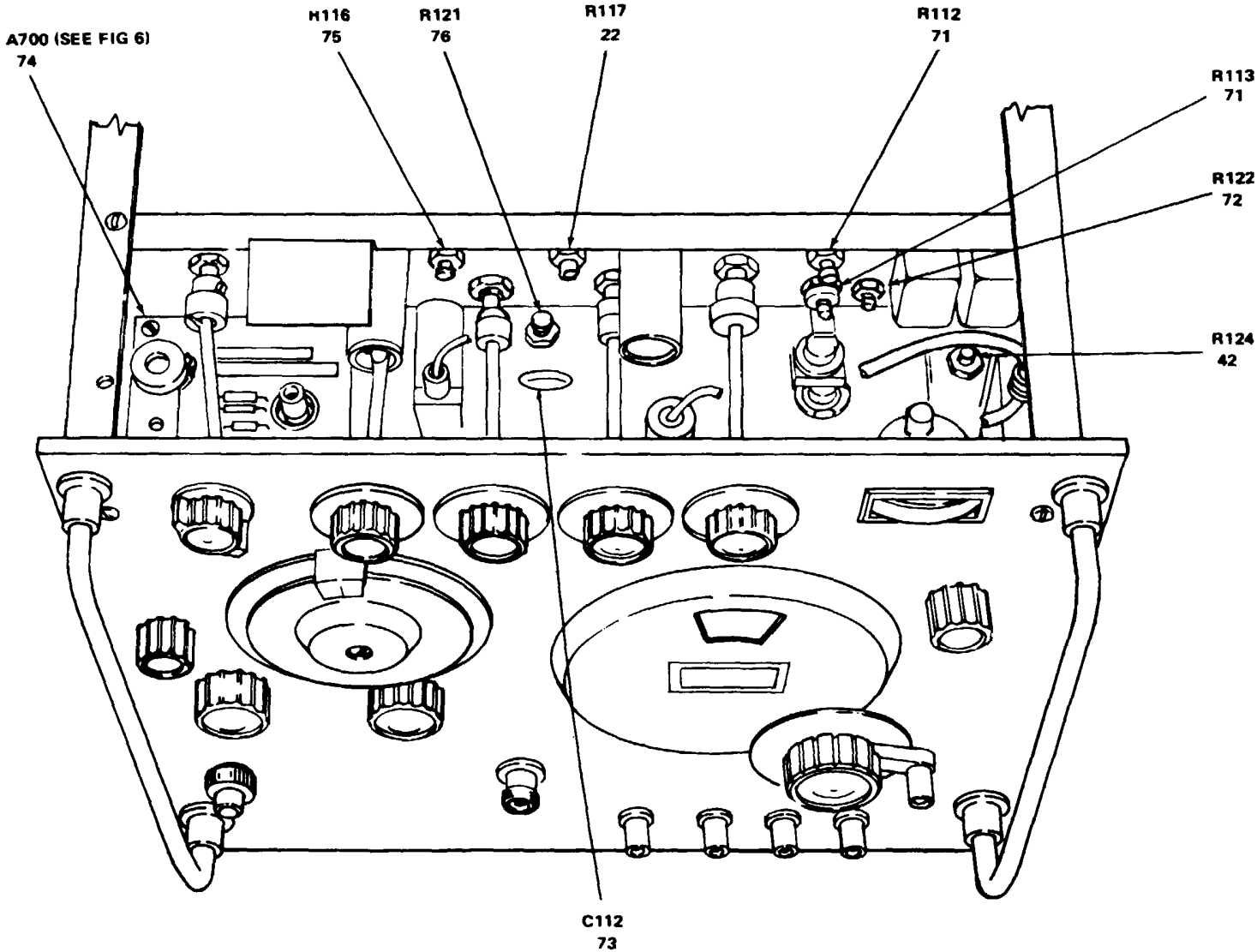
Figure 1. Signal Generator SG-944/U, HP620B (Sheet 6 of 15).



EL5GH007

PARTIAL SIDE VIEW

Figure 1. Signal Generator SG-944/U, HP620B (Sheet 7 of 15).



PARTIAL TOP VIEW

EL5GH008

Figure 1. Signal Generator SG-944/U, HP620B (Sheet 8 of 15).

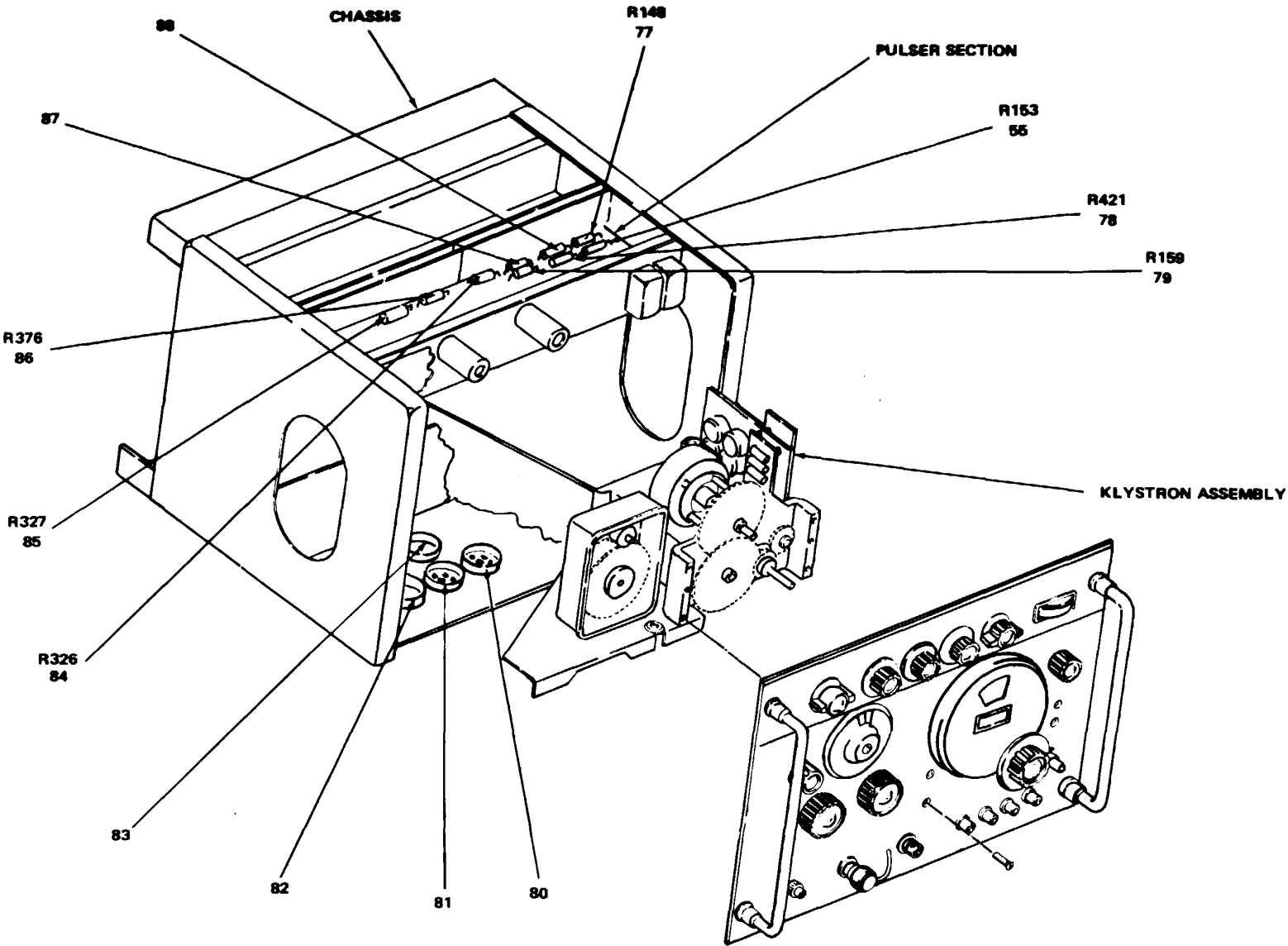


Figure 1. Signal Generator SG-944/U, HP620B (Sheet 9 of 15).

EL5GH009

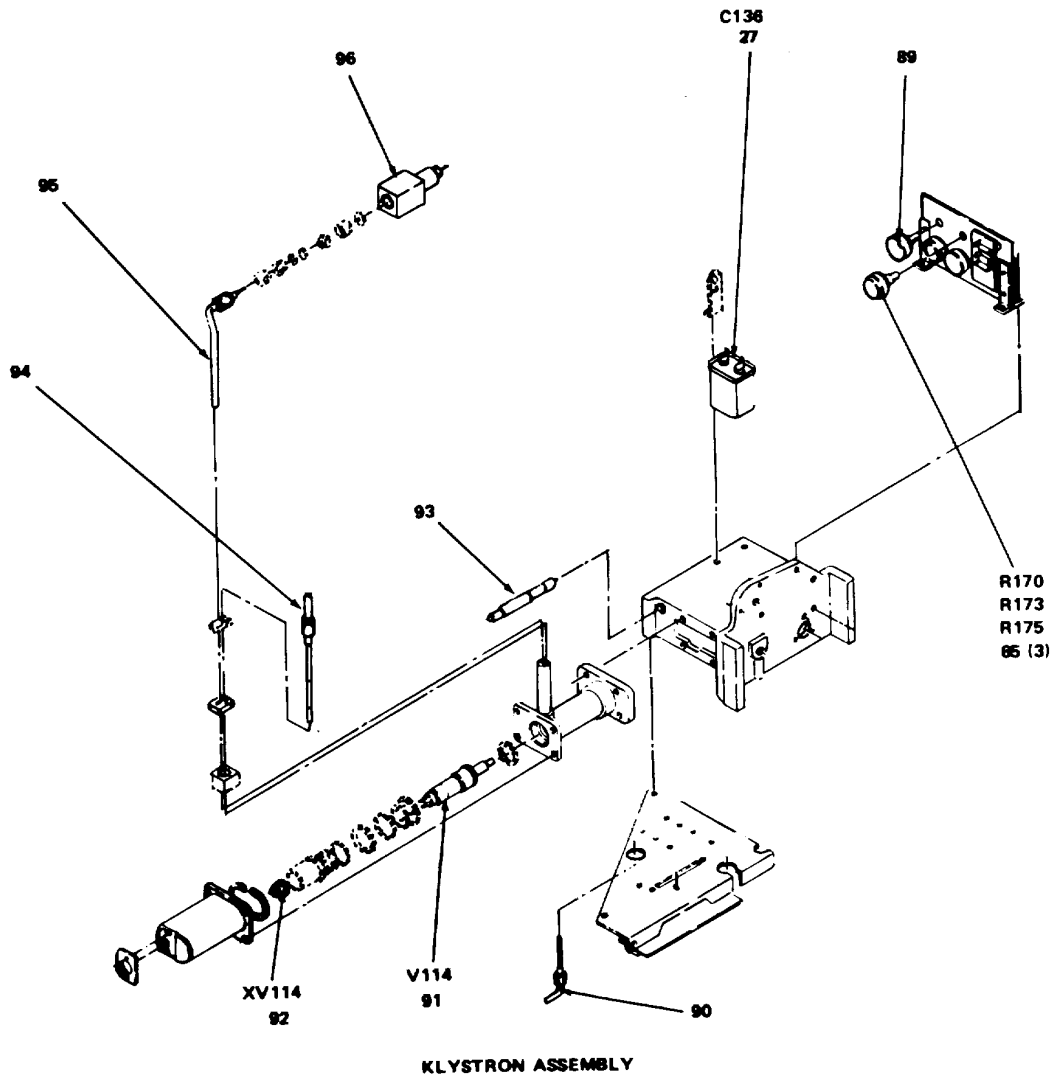
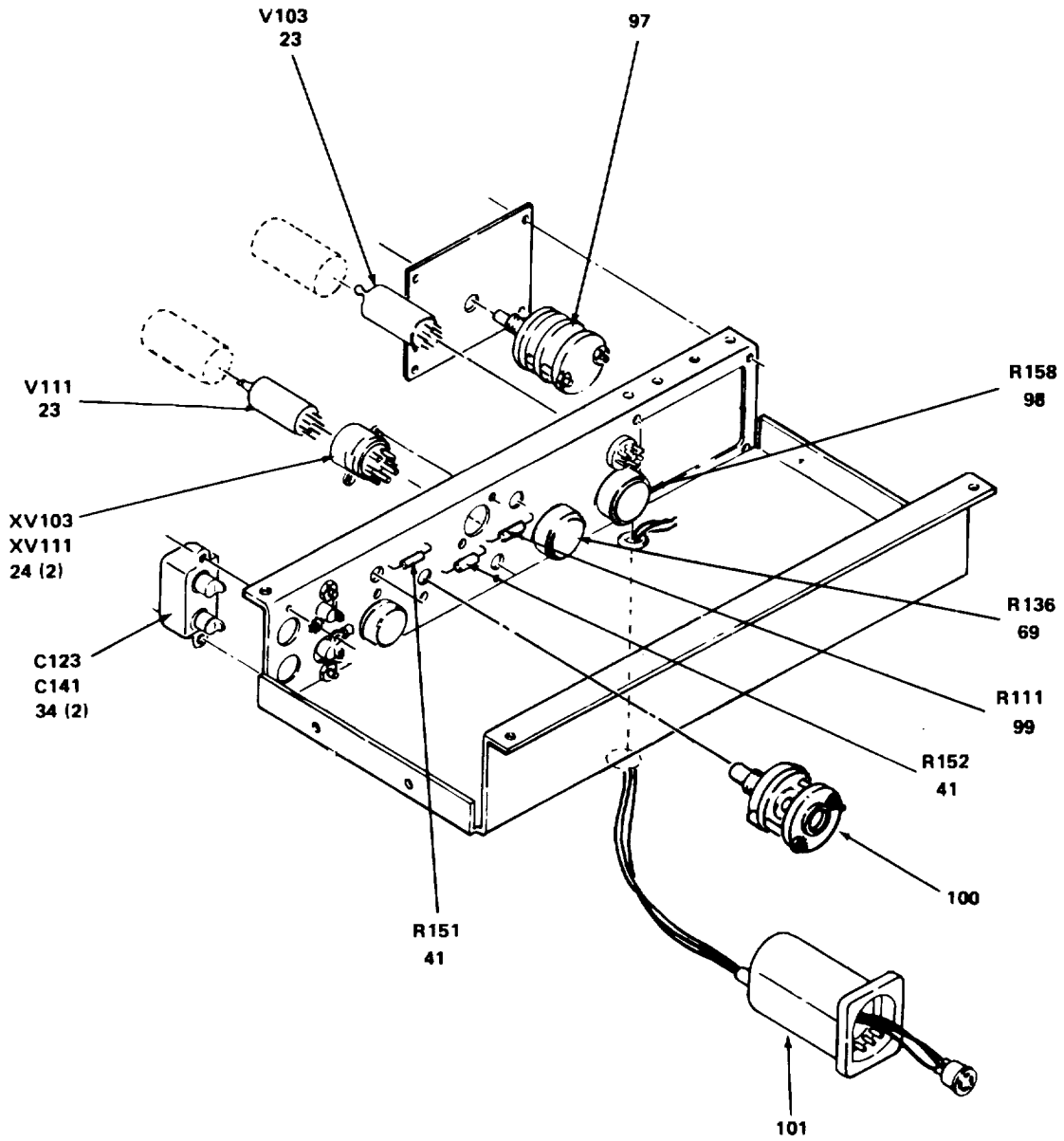


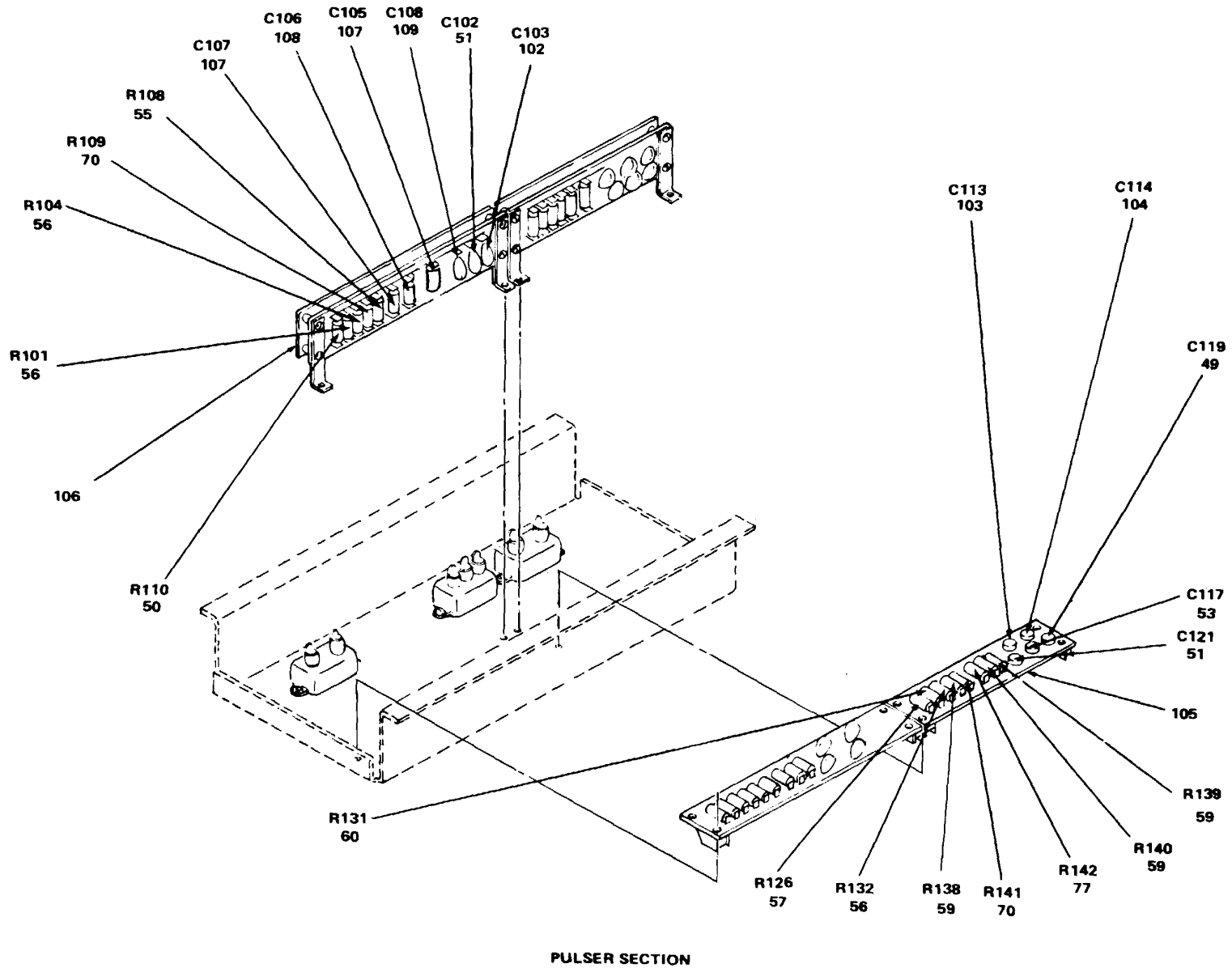
Figure 1. Signal Generator SG-944/U, HP620B (Sheet 10 of 15)



PARTIAL REAR VIEW, PULSER SECTION

EL5GH011

Figure 1. Signal Generator SG-944/U, HP620B (Sheet 11 of 15).



PULSER SECTION

EL5GH012

Figure 1. Signal Generator SG-944/U, HP620B (Sheet 12 of 15).

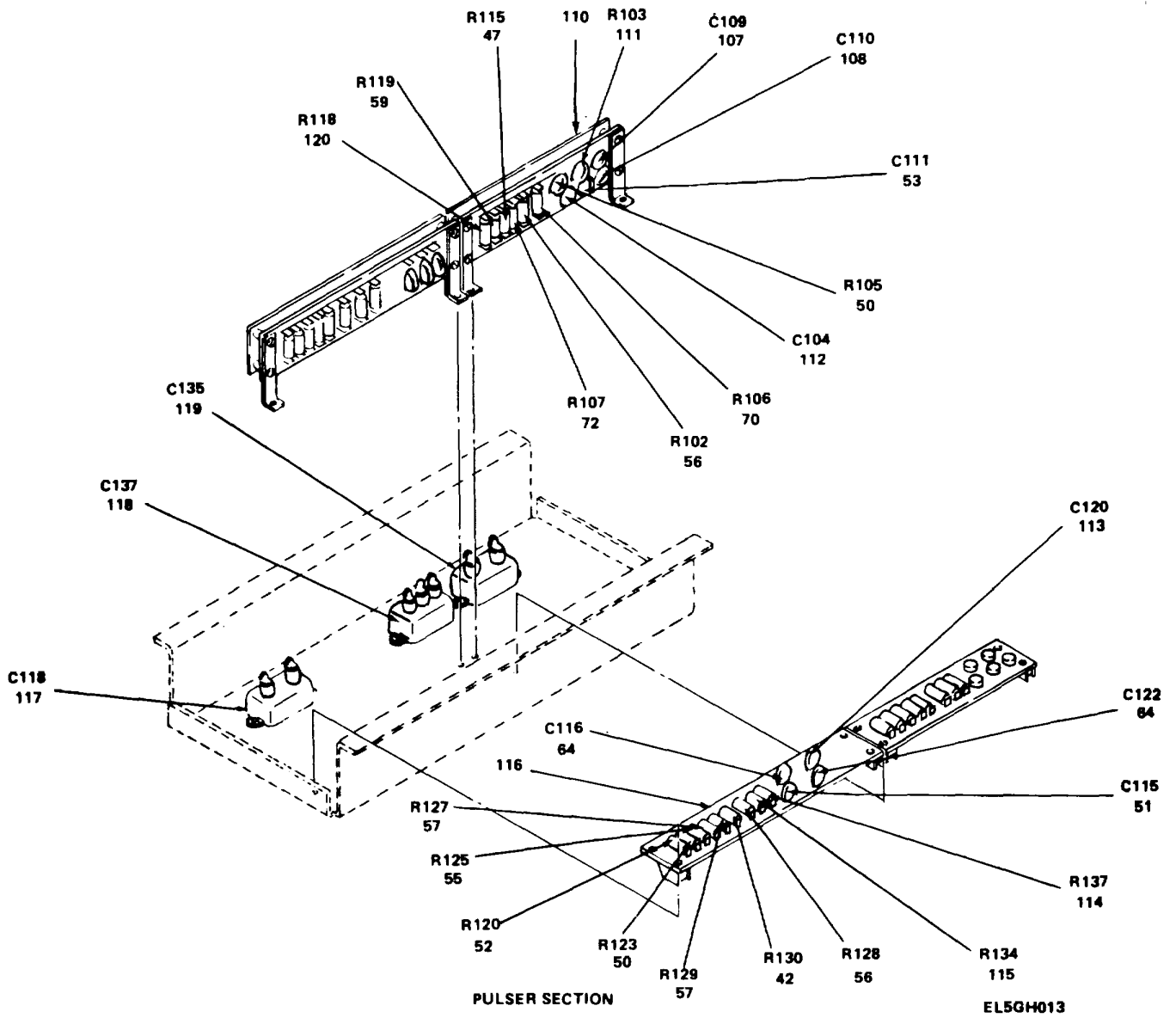
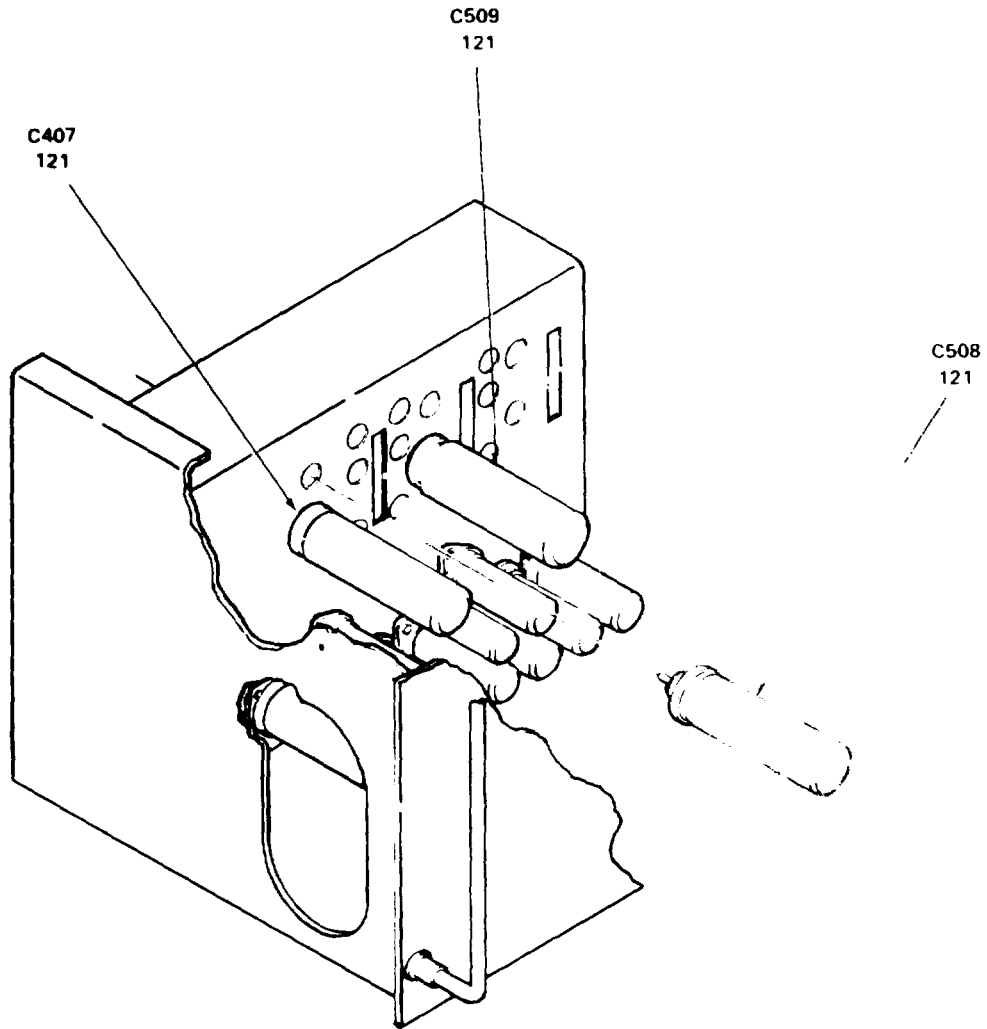


Figure 1. Signal Generator SG-944/U, HP620B (Sheet 13 of 15).



CHASSIS, FRONT CUTAWAY VIEW

EL5GH014

Figure 1. Signal Generator SG-944/U, HP620B (Sheet 14 of 15).

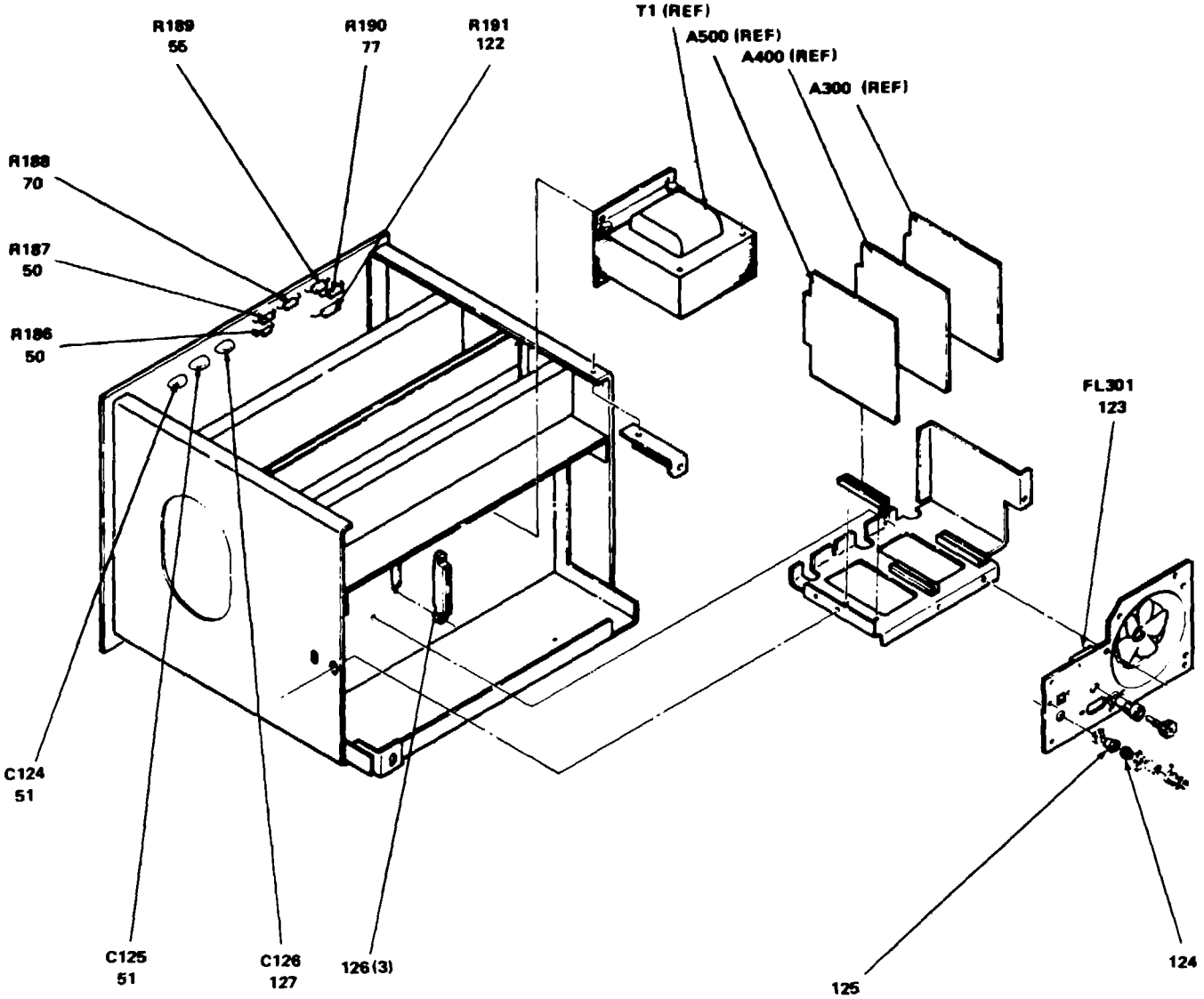


Figure 1. Signal Generator SG-944U, HP620B (Sheet 15 of 15).

EL5GH015

(1) ILLUSTRATION		(2)	(3)	(4)	(5)	(6)	(7)	(8)
(a) FIG NO.	(b) ITEM NO.	SMR CODE	NATIONAL STOCK NUMBER	FSCM	PART NUMBER	DESCRIPTION USABLE ON CODE	U/M	QTY INC IN UNIT
						GROUP 00 SIGNAL GENERATOR SG-944/U, HP620B		
1	1	PAHZZ	6625-00-998-6521	28480	1120-1277	METER	EA	1
1	2	PAHZZ	5995-00-139-5785	28480	618B16S	CABLE ASSEMBLY, RADI	EA	1
1	2	PAHZZ	5995-00-828-9167	28480	618B16T	CABLE ASSEMBLY, RADI	EA	1
1	2	PAHZZ	5995-00-139-5786	28480	618B16U	CABLE ASSEMBLY, RADI	EA	1
1	2	PAHZZ	5995-00-139-5787	28480	618B16V	CABLE ASSEMBLY, RADI	EA	1
1	3	PAHZZ	5930-01-090-7228	28480	3101-0107	SWITCH, PUSH	EA	1
1	4	PAHZZ	5905-00-794-3314	28480	0687-1011	RESISTOR, FIXED, COMP	EA	1
1	5	XDHZZ		28480	0693-6821	RESISTOR, FIXE	EA	1
1	6	PAHZZ	5905-00-244-7911	81349	RCR32G682JS	RESISTOR, FIXED, COMP	EA	1
1	7	PAHZZ	5930-00-072-0852	28480	3102-0001	SWITCH, SENSITIVE	EA	1
1	8	PAHZZ	5905-00-835-8861	28480	2100-0127	RESISTOR, VARIABLE, W	EA	1
1	9	PAHZZ	5910-00-817-7275	28480	0170-0038	CAPACITOR, FIXED, PLA	EA	1
1	10	XDHHH		28480	0618-625	SWITCH ASSY MOD	EA	1
1	11	PAHZZ	5961-00-950-0537	28480	1901-0029	SEMICONDUCTOR DEVIC	EA	1
1	12	PAHZZ	5961-00-904-0296	28480	1901-0096	SEMICONDUCTOR DEVIC	EA	1
1	13	PAHZZ	5910-00-087-3522	28480	0180-0024	CAPACITOR, FIXED, ELE	EA	5
1	14	PAHZZ	5910-00-931-1908	28480	0180-0128	CAPACITOR, FIXED, ELE	EA	1
1	15	PAHZZ	5930-00-918-4381	28480	3101-0100	SWITCH, PUSH	EA	1
1	16	XDHZZ		28480	0360-0064	TERMINAL BOARD	EA	1
1	17	PAHZZ	5935-00-824-7685	28480	1250-0144	SHELL, ELECTRICAL CO	EA	2
1	18	PAHZZ	5905-00-830-6633	28480	0757-0059	RESISTOR, FIXED, FILM	EA	2
1	19	PAHZZ	5910-00-087-6816	28480	0180-0042	CAPACITOR, FIXED, ELE	EA	4
1	20	PAHZZ	5935-00-823-9935	28480	1251-0234	CONNECTOR, RECEPTACL	EA	1
1	21	PAOZZ	5920-01-028-5727	81349	F02B250V3A	FUSE, CARTRIDGE	EA	1
1	22	XDHZZ		28480	2100-0025	RESISTOR, VARIABLE, N	EA	3
1	23	PAHZZ	5960-00-134-6012	81349	6189W	ELECTRON TUBE	EA	7
1	24	XDHZZ		28480	1200-03	SOCKET, PLUG-IN	EA	8
1	25	PAHZZ	5960-00-552-0082	81349	5727	ELECTRON TUBE	EA	1
1	26	XDHZZ		28480	1200-0017	SOCKET, PLUG-IN ELEC	EA	4
1	27	XDHZZ		28480	0160-0088	CAPACITOR, FIXED, PAP	EA	2
1	28	PAHZZ	5960-00-134-9919	28480	1930-0013	ELECTRON TUBE	EA	3
1	29	PAHZZ	5950-00-056-0131	28480	9100-1703	TRANSFORMER, POWER	EA	1
1	30	XDHHH		28480	00618-6058	CIRCUIT CARD	EA	1
1	31	XDHZZ		28480	3160-0058	BLOWER	EA	1
1	32	PAHZZ	5935-00-058-9423	28480	1251-0148	CONNECTOR, RECEPTACL	EA	1
1	33	PAHZZ	6150-00-995-9822	28480	8120-0078	CABLE ASSEMBLY, POWE	EA	1
1	34	PAHZZ	5910-00-666-8475	28480	0160-0081	CAPACITOR, FIXED, PAP	EA	3
1	35	PAHZZ	5960-00-615-5584	28480	1932-0045	ELECTRON TUBE	EA	1
1	36	PAHZZ	6625-00-998-6530	28480	00618-632	BOARD ASSEMBLY	EA	1

SECTION II

TM 11-6625-2520-24P-1

(1) ILLUSTRATION		(2)	(3)	(4)	(5)	(6)	(7)	(8)
(a) FIG NO.	(b) ITEM NO.	SMR CODE	NATIONAL STOCK NUMBER	FSCM	PART NUMBER	DESCRIPTION	U/M	QTY INC IN UNIT
						USABLE ON CODE		
1	37	PAHZZ	5930-00-977-1760	28480	3101-0033	SWITCH, SLIDE	EA	1
1	38	PAHZZ	6130-00-490-8934	28480	00618-60097	CIRCUIT CARD ASSEMB	EA	1
1	39	XDHZZ		28480	00618-60096	CIRCUIT CARD ASSEMB	EA	1
1	40	PAHZZ	6130-00-490-8891	28480	00618-60095	CIRCUIT CARD ASSEMB	EA	1
1	41	PAHZZ	5905-00-111-8372	81349	RRC32G222JS	RESISTOR, FIXED, COMP	EA	3
1	42	PAHZZ	5905-00-279-2553	28480	0690-1221	RESISTOR, FIXED, COMP	EA	5
1	43	PAHZZ	5905-00-222-6276	28480	0757-0815	RESISTOR, FIXED, FILM	EA	1
1	44	PAHZZ	5905-00-247-8749	81349	RRC32G823JS	RESISTOR, FIXED, COMP	EA	1
1	45	PAHZZ	5905-00-247-8733	81349	RRC32G562JS	RESISTOR, FIXED, COMP	EA	1
1	46	XDHZZ		28480	0693-3331	RESISTOR, FIXED, COMP	EA	4
1	47	PAHZZ	5905-00-841-6422	28480	0690-1051	RESISTOR, FIXED	EA	2
1	48	PAHZZ	5910-00-082-7420	28480	0140-0017	CAPACITOR, FIXED, MIC	EA	1
1	49	XDHZZ		28480	0140-0015	CAPACITOR, FIXED, MIC	EA	5
1	50	XDHZZ		28480	0690-4731	RESISTOR, FIXED, COMP	EA	8
1	51	PAHZZ	5910-00-919-3308	28480	0140-0008	CAPACITOR, FIXED, MIC	EA	6
1	52	PAHZZ	5905-00-104-8353	81349	RRC32G472JS	RESISTOR, FIXED, COMP	EA	2
1	53	PAHZZ	5910-00-034-1270	28480	0140-0054	CAPACITOR, FIXED, MIC	EA	4
1	54	PAHZZ	5910-00-781-9398	28480	0180-0049	CAPACITOR, FIXED, ELE	EA	1
1	55	PAHZZ	5905-00-981-2659	01121	GB4741	RESISTOR, FIXED, COMP	EA	5
1	56	PAHZZ	5905-00-469-2775	28480	0690-1251	RESISTOR, VARIABLE, N	EA	7
1	57	XDHZZ		28480	0690-1031	RESISTOR	EA	4
1	58	PAHZZ	5905-00-849-1755	01121	GB1241	RESISTOR, FIXED, COMP	EA	1
1	59	PAHZZ	5905-00-184-7703	81349	RRC42G103JS	RESISTOR, FIXED, COMP	EA	5
1	60	PAHZZ	5905-00-469-2777	28480	0690-2741	RESISTOR	EA	2
1	61	PAHZZ	5905-00-050-6962	01121	GB5641	RESISTOR, FIXED, COMP	EA	1
1	62	XDHZZ		28480	0690-1021	RESISTOR, FIXED, COMP	EA	1
1	63	PAHZZ	5905-00-005-2867	81349	RRC42G153JS	RESISTOR, FIXED, COMP	EA	1
1	64	XDHZZ		28480	0140-0005	CAPACITOR, FIXED, MIC	EA	3
1	65	XDHZZ		28480	2100-0028	RESISTOR, VARIABLE, N	EA	4
1	66	PAHZZ	5905-00-469-2781	28480	0693-4721	RESISTOR, FIXED, COMP	EA	1
1	67	PAHZZ	5905-00-172-0855	28480	2100-0465	RESISTOR, VARIABLE, N	EA	1
1	68	PAHZZ	5905-00-998-1809	28480	0698-3260	RESISTOR	EA	1
1	69	PAHZZ	5905-00-829-2827	28480	2100-0047	RESISTOR, VARIABLE, N	EA	2
1	70	PAHZZ	5905-00-469-2773	28480	0690-1041	RESISTOR, FIXED, COMP	EA	5
1	71	XDHZZ		28480	2100-0029	RESISTOR, VARIABLE, N	EA	2
1	72	PAHZZ	5905-00-152-8373	81349	RRC42G273JS	RESISTOR, FIXED, COMP	EA	2
1	73	XDHZZ		28480	0140-0021	CAPACITOR, FIXED, MIC	EA	1
1	74	XDHZZ		28480	00620-6027	CIRCUIT CARD	EA	1
1	75	PAHZZ	5905-00-235-3534	81349	RRC32G681JS	RESISTOR, FIXED, COMP	EA	1
1	76	PAHZZ	5905-00-228-6081	81349	RRC32G121JS	RESISTOR, FIXED, COMP	EA	1

SECTION II

TM 11-6625-2520-24P-1

(1) ILLUSTRATION		(2)	(3)	(4)	(5)	(6)	(7)	(8)
(a) FIG NO.	(b) ITEM NO.	SMR CODE	NATIONAL STOCK NUMBER	FSCM	PART NUMBER	DESCRIPTION USABLE ON CODE	U/M	QTY INC IN UNIT
1	77	PAHZZ	5905-00-477-2199	28480	0690-1541	RESISTOR	EA	3
1	78	PAHZZ	5905-00-141-1071	28480	0687-4741	RESISTOR, FIXED, COMP	EA	1
1	79	PAHZZ	5905-00-082-7531	28480	0690-1011	RESISTOR, FIXED, COMP	EA	1
1	80	PAHZZ	5935-00-850-6567	28480	1200-0053	SOCKET, PLUG-IN ELEC	EA	1
1	81	PAHZZ	5935-00-849-9455	28480	1200-0058	SOCKET, PLUG-IN ELEC	EA	1
1	82	PAHZZ	5935-00-808-9569	28480	1200-0062	SOCKET, PLUG-IN ELEC	EA	1
1	83	PAHZZ	5935-00-042-4671	91662	04-730-02	SOCKET, PLUG-IN ELEC	EA	1
1	84	PAHZZ	5905-00-632-5238	81349	RNC65K6192FS	RESISTOR, FIXED, FILM	EA	1
1	85	PAHZZ	5905-00-930-7959	28480	0757-0307	RESISTOR, FIXED, FILM	EA	1
1	86	PAHZZ	5905-00-954-8684	28480	0757-0123	RESISTOR, FIXED, FILM	EA	1
1	87	PAHZZ	5905-00-759-8556	81349	RCR42G823JS	RESISTOR, FIXED, COMP	EA	1
1	88	XDHZZ		28480	0757-0437	RESISTOR, FIXED, FILM	EA	1
1	89	PAHZZ	5905-00-752-6967	28480	2100-0045	RESISTOR, VARIABLE, N	EA	1
1	90	PAHZZ	6625-00-476-2080	28480	00620-624	SAMPLE PROBE ASSY	EA	1
1	91	PAHZZ	5960-00-950-3553	28480	1950-0017	ELECTRON TUBE	EA	1
1	92	PAHZZ	5935-00-259-2607	24446	K7886043REV5	SOCKET, PLUG-IN ELEC	EA	1
1	93	PAHZZ	5915-00-793-0226	28480	618B-27	FILTER, LOW PASS	EA	1
1	94	PAHZZ	6625-00-918-0615	28480	620A-34BB	ATTENUATOR ASSEMBLY	EA	1
1	95	PAHZZ	6625-00-250-4866	28480	620A-28N	PLUNGER ASSEMBLY, BO	EA	1
1	96	PAHZZ	6625-00-406-4318	28480	00618-628	BOLO DETECTOR ASSY	EA	1
1	97	PAHZZ	5930-00-593-5151	28480	3100-0076	SWITCH, ROTARY	EA	1
1	98	PAHZZ	5905-00-856-8688	28480	2100-0051	RESISTOR, VARIABLE, N	EA	1
1	99	PAHZZ	5905-00-919-8613	28480	2100-0059	RESISTOR, VARIABLE, N	EA	1
1	100	PAHZZ	5930-00-593-5145	28480	3100-0075	SWITCH, ROTARY	EA	1
1	101	XDHZZ		28480	618B-52	SOCKET ASSEMBLY	EA	1
1	102	PAHZZ	5910-00-082-7423	28480	0140-0027	CAPACITOR, FIXED, MIC	EA	1
1	103	PAHZZ	5910-00-938-1013	28480	0140-0001	CAPACITOR, FIXED, MIC	EA	1
1	104	PAHZZ	5910-00-901-8796	81349	CM15FD560G03	CAPACITOR, FIXED, MIC	EA	1
1	105	XDHHH		28480	618B-75A	SIGNAL GENERATOR SU	EA	1
1	106	XDHHH		28480	618B-75D	ELECTRONIC COMP ASSY	EA	1
1	107	PAHZZ	5910-00-985-1281	28480	0140-0018	CAPACITOR, FIXED, MIC	EA	3
1	108	XDHZZ		28480	0140-0009	CAPACITOR, FIXED, MIC	EA	2
1	109	PAHZZ	5910-00-797-9730	28480	0140-0024	CAPACITOR, FIXED, MIC	EA	1
1	110	XDHHH		28480	00618-627	ELECTRONIC COMP ASSY	EA	1
1	111	PAHZZ	5905-00-072-0583	28480	0693-4731	RESISTOR, FIXED, COMP	EA	1
1	112	PAHZZ	5910-00-034-1848	28480	0140-0023	CAPACITOR, FIXED, MIC	EA	1
1	113	PAHZZ	5910-00-406-4319	28480	0140-0114	CAPACITOR	EA	1
1	114	PAHZZ	5905-00-247-8722	81349	RCR32G271JS	RESISTOR, FIXED, COMP	EA	1
1	115	PAHZZ	5905-00-247-8728	81349	RCR32G392JS	RESISTOR, FIXED, COMP	EA	1
1	116	XDHHH		28480	618B-75B	SIGNAL GENERATOR SU	EA	1

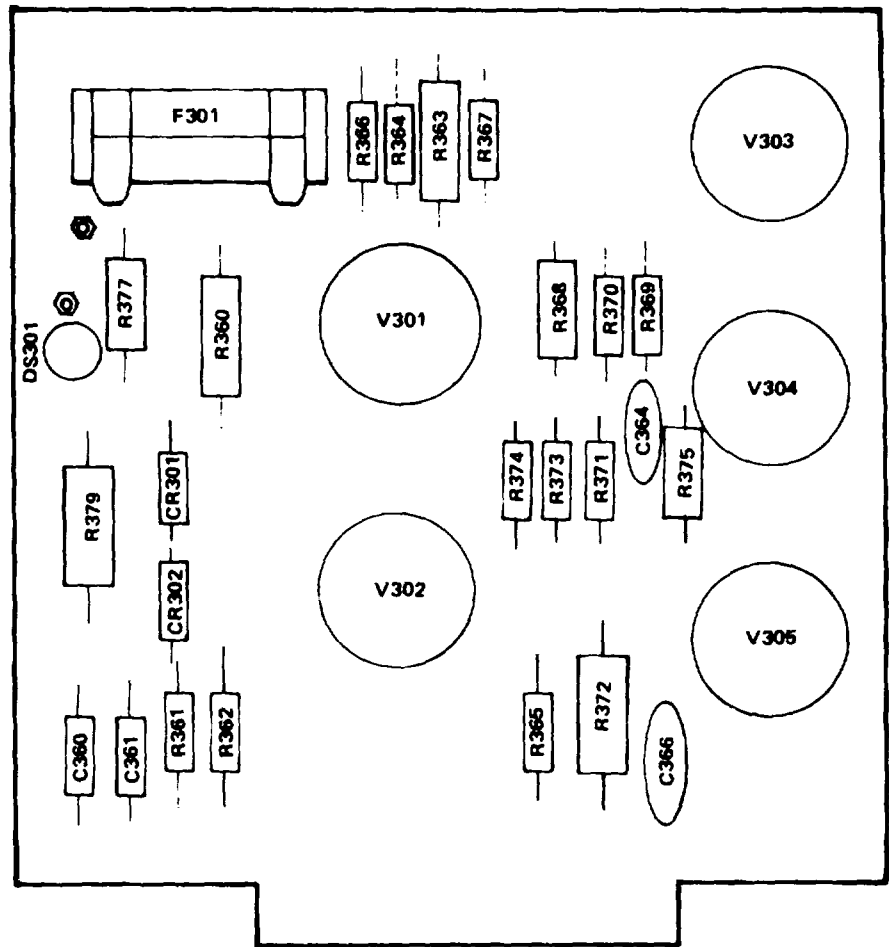
SECTION II

TM 11-6625-2520-24P-1

(1) ILLUSTRATION		(2)	(3)	(4)	(5)	(6) DESCRIPTION	(7)	(8)
(a) FIG NO.	(b) ITEM NO.	SMR CODE	NATIONAL STOCK NUMBER	FSCM	PART NUMBER	USABLE ON CODE	U/M	QTY INC IN UNIT
1	117	PAHZZ	5910-00-397-1849	28480	0160-0090	CAPACITOR, FIXED, PAP	EA	1
1	118	PAHZZ	5910-00-910-5114	28480	0160-0089	CAPACITOR, FIXED, PAP	EA	1
1	119	PAHZZ	5910-00-668-9338	00656	P30MT	CAPACITOR, FIXED, PAP	EA	1
1	120	XDHZZ		01121	HB1831	RESISTOR, FIXED	EA	1
1	121	PAHZZ	5910-00-681-9264	28480	0160-0102	CAPACITOR, FIXED, PAP	EA	3
1	122	PAHZZ	5905-00-133-0379	81349	RCR32G184JS	RESISTOR, FIXED, COMP	EA	1
1	123	PAHZZ	5915-00-501-2674	28480	9110-0014	FILTER, RADIO FREQUE	EA	1
1	124	PAHZZ	5935-00-819-6957	81312	M7PLSN	CONNECTOR, RECEPTACL.....	EA	1
1	125	PAHZZ	5935-00-259-2039	28480	1251-1036	CONNECTOR, RECEPTACL.....	EA	1
1	126	PAHZZ	5935-00-948-9078	28480	1251-0194	CONNECTOR, RECEPTACL.....	EA	3
1	127	PAHZZ	5910-00-549-2428	28480	0140-0020	CAPACITOR, FIXED, MIC	EA	1
8/(9 BLANK)								

LEGEND

REF DES	ITEM NO.
C360	1
C361	1
C364	2
C366	2
CR301	3
CR302	3
DS301	4
F301	5
R360	6
R361	7
R362	7
R363	8
R364	9
R365	8
R366	9
R367	7
R368	10
R369	11
R370	11
R371	12
R372	13
R373	14
R374	15
R375	16
R377	17
R379	18
V301	19
V302	19
V303	20
V304	20
V305	21



EL5GH016

PREFIX ALL REFERENCE
DESIGNATORS WITH A300

Figure 2. Circuit Card Assembly, 300 VPS, A300.

SECTION II

TM 11-6625-2520-24P-1

(1) ILLUSTRATION		(2)	(3)	(4)	(5)	(6) DESCRIPTION	(7)	(8)
(a) FIG NO.	(b) ITEM NO.	SMR CODE	NATIONAL STOCK NUMBER	FSCM	PART NUMBER	USABLE ON CODE	U/M	QTY INC IN UNIT
						GROUP 01 CIRCUIT CARD ASSEMBLY, 300VPS, A300		
2	1	PAHZZ	5910-00-851-7794	28480	0150-0012	CAPACITOR, FIXED, CER	EA	2
2	2	PAHZZ	5910-00-797-4909	28480	0150-0052	CAPACITOR, FIXED, CER	EA	2
2	3	PAHZZ	5961-00-950-0537	28480	1901-0029	SEMICONDUCTOR DEVIC	EA	2
2	4	PAOZZ	6240-00-912-5186	28480	2140-0047	LAMP, GLOW	EA	1
2	5	PAOZZ	5920-00-199-9498	81349	F02B250V1-2A	FUSE, CARTRIDGE	EA	1
2	6	PAHZZ	5905-00-476-5722	28480	0813-0040	RESISTOR	EA	1
2	7	PAHZZ	5905-00-057-8464	28480	0757-0789	RESISTOR, FIXED, FILM	EA	3
2	8	PAHZZ	5905-00-887-0591	28480	0690-3911	RESISTOR, FIXED, COMP	EA	2
2	9	PAHZZ	5905-00-057-8457	28480	0757-0740	RESISTOR, FIXED, FILM	EA	2
2	10	PAHZZ	5905-00-994-8537	28480	0757-0352	RESISTOR, FIXED, FILM	EA	1
2	11	XDHZZ		28480	0757-0131	RESISTOR, FIXED, FILM	EA	2
2	12	PAHZZ	5905-00-981-2588	28480	0757-0871	RESISTOR, FILM	EA	1
2	13	XDHZZ		28480	0811-0007	RESISTOR, FIXED, WIRE	EA	1
2	14	PAHZZ	5905-00-828-6820	28480	0757-0156	RESISTOR, FIXEDFILM	EA	1
2	15	PAHZZ	5905-00-057-8490	28480	0757-0872	RESISTOR, FIXED, FILM	EA	1
2	16	PAHZZ	5905-00-111-6009	81349	RCR32G824JS	RESISTOR, FIXED, COMP	EA	1
2	17	PAHZZ	5905-00-057-8460	28480	0757-0777	RESISTOR, FIXED, FILM	EA	1
2	18	XDHZZ		28480	0812-0038	RESISTOR, FIXED, WIRE	EA	1
2	19	PAHZZ	5960-00-088-6527	28480	1921-0014	ELECTRON TUBE	EA	2
2	20	PAHZZ	5960-00-841-2352	04404	1932-0030	ELECTRON TUBE	EA	2
2	21	PAHZZ	5960-00-624-4718	81349	0B2WA	ELECTRON TUBE	EA	1

LEGEND

REF DES	ITEM NO
C401	1
C402	1
C405	2
C406	2
CR401	3
CR402	3
DS401	4
F401	5
R401	6
R404	7
R405	8
R406	9
R407	10
R408	11
R409	9
R410	12
R411	13
R412	14
R413	15
R414	16
R415	17
R416	17
R417	18
R418	18
R419	7
V401	19
V402	20
V403	21
V404	22
V405	19

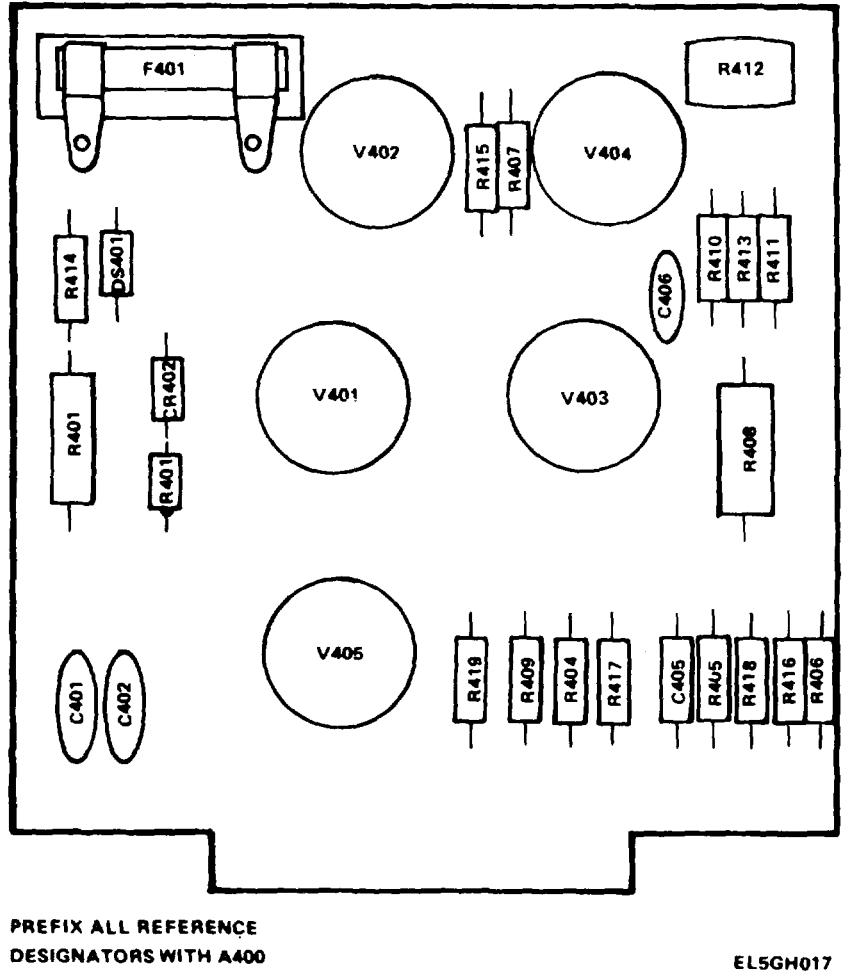


Figure 3. Circuit Card Assembly, 1000 VPS, A400.

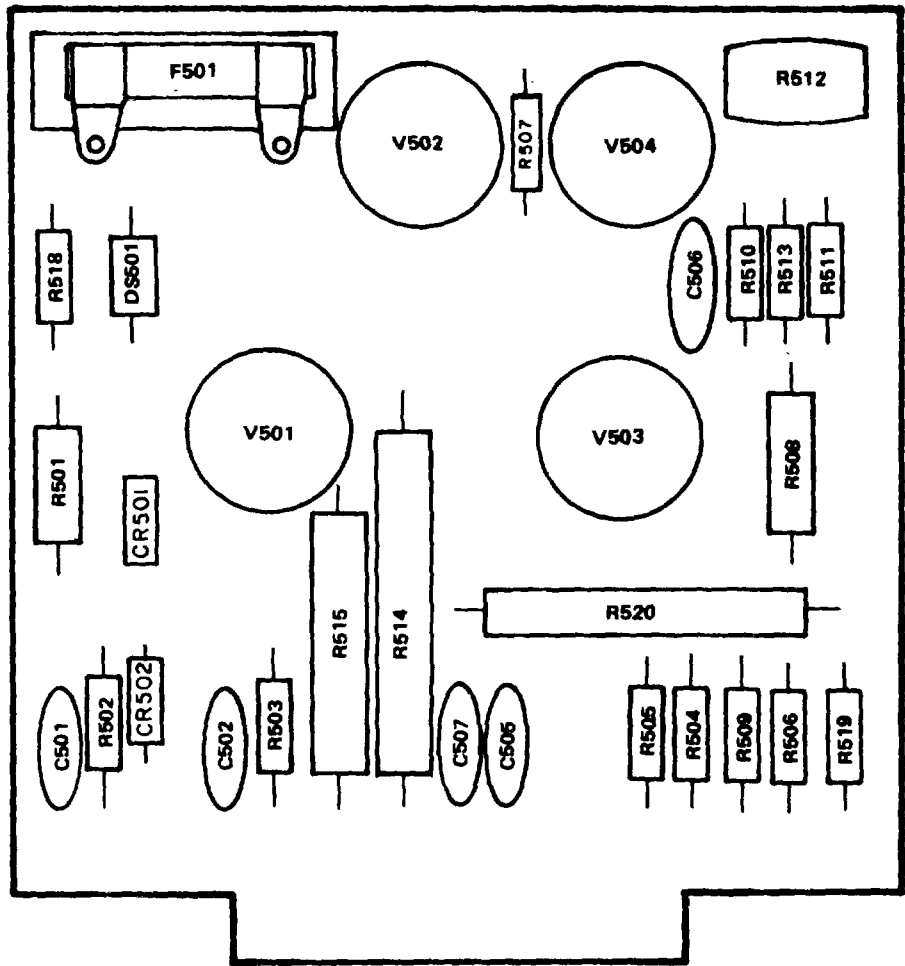
SECTION II

TM 11-6625-2520-24P-1

(1) ILLUSTRATION		(2)	(3)	(4)	(5)	(6) DESCRIPTION	(7)	(8)
(a) FIG NO.	(b) ITEM NO.	SMR CODE	NATIONAL STOCK NUMBER	FSCM	PART NUMBER	USABLE ON CODE	U/M	QTY INC IN UNIT
						GROUP 02 CIRCUIT CARD ASSEMBLY, 1000VPS, A400		
3	1	PAHZZ	5910-00-851-7794	28480	0150-0012	CAPACITOR, FIXED, CER	EA	2
3	2	PAHZZ	5910-00-797-4909	28480	0150-0052	CAPACITOR, FIXED, CER	EA	2
3	3	PAHZZ	5961-00-494-5023	28480	1901-0487	SEMICONDUCTOR DEVIC	EA	2
3	4	PAOZZ	6240-00-912-5186	28480	2140-0047	LAMP, GLOW	EA	1
3	5	PAOZZ	5920-00-199-9498	81349	F02B50V1-2A	FUSE, CARTRIDGE	EA	1
3	6	PAHZZ	5905-00-156-0435	81349	RCR42G390JS	RESISTOR, FIXED, COMP	EA	1
3	7	XDHZZ	5905-00-994-8542	28480	0757-0862	RESISTOR, FIXED, FILM	EA	2
3	8	PAHZZ	5905-00-927-2878	28480	0757-0772	RESISTOR, FIXED, FILM	EA	1
3	9	PAHZZ	5905-00-828-6820	28480	0757-0156	RESISTOR, FIXED, FILM	EA	2
3	10	PAHZZ	5905-00-057-8468	28480	0757-0854	RESISTOR, FIXED, FILM	EA	1
3	11	PAHZZ	5905-00-422-4129	81349	RCR42G224JS	RESISTOR, FIXED, COMP	EA	1
3	12	PAHZZ	5905-00-057-8464	28480	0757-0789	RESISTOR, FIXED, FILM	EA	1
3	13	PAHZZ	5905-00-394-1459	28480	0757-0859	RESISTOR, FIXED, FILM	EA	1
3	14	PAHZZ	5905-00-050-7071	28480	2100-1472	RESISTOR, VARIABLE, N	EA	1
3	15	PAHZZ	5905-00-057-8483	28480	0757-0870	RESISTOR, FIXED, FILM	EA	1
3	16	PAHZZ	5905-00-057-8460	28480	0757-0777	RESISTOR, FIXED, FILM	EA	1
3	17	PAHZZ	5905-00-057-8480	28480	0757-1000	RESISTOR, FIXED, FILM	EA	2
3	18	PAHZZ	5905-00-998-1909	28480	0757-0283	RESISTOR, FIXED, FILM	EA	2
3	19	PAHZZ	5960-00-269-3691	28480	1923-0071	ELECTRON TUBE	EA	2
3	20	PAHZZ	5960-00-262-0286	81349	5651WA	ELECTRON TUBE	EA	1
3	21	PAHZZ	5960-00-961-1083	80131	6EJ7	ELECTRON TUBE	EA	1
3	22	PAHZZ	5960-00-557-6780	81349	6C4WA	ELECTRON TUBE	EA	1

LEGEND

REF DES	ITEM NO
C501	1
C502	1
C505	2
C506	2
C507	2
CR501	3
CR502	3
DS501	4
F501	5
R501	6
R502	7
R503	7
R504	8
R505	9
R506	10
R507	11
R508	12
R509	13
R510	14
R511	15
R512	16
R513	17
R514	18
R515	19
R518	20
R519	21
R520	22
V501	23
V502	24
V503	25
V504	26



PREFIX ALL REFERENCE
DESIGNATORS WITH A500

EL5GH018

Figure 4. Circuit Card Assembly, 1550 VPS, A500.

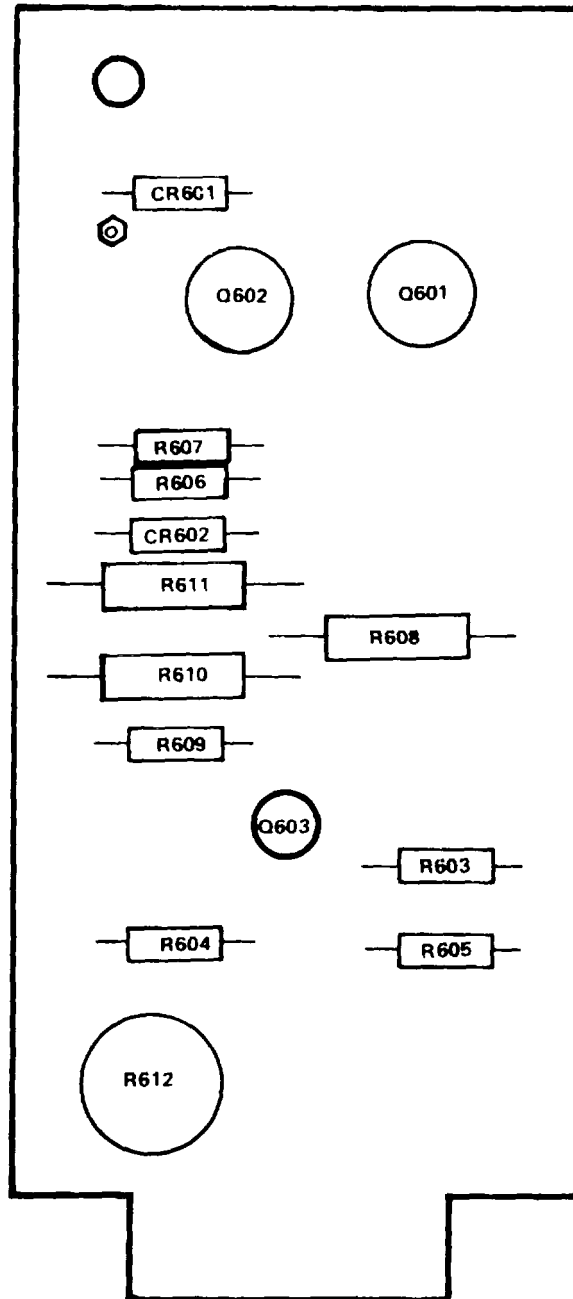
SECTION II

TM 11-6625-2520-24P-1

(1) ILLUSTRATION		(2)	(3)	(4)	(5)	(6)	(7)	(8)
(a) FIG NO.	(b) ITEM NO.	SMR CODE	NATIONAL STOCK NUMBER	FSCM	PART NUMBER	DESCRIPTION USABLE ON CODE	U/M	QTY INC IN UNIT
						GROUP 03 CIRCUIT CARD ASSEMBLY, 1550VPS, A500		
4	1	PAHZZ	5910-00-851-7794	28480	0150-0012	CAPACITOR, FIXED, CER	EA	2
4	2	PAHZZ	5910-00-797-4909	28480	0150-0052	CAPACITOR, FIXED, CER	EA	3
4	3	PAHZZ	5961-00-921-3778	28480	1901-0036	SEMICONDUCTOR DEVIC	EA	2
4	4	PAOZZ	6240-00-912-5186	28480	2140-0047	LAMP, GLOW	EA	1
4	5	PAOZZ	5920-00-898-0400	28480	2110-0012	FUSE, CARTRIDGE	EA	1
4	6	PAHZZ	5905-00-539-3205	01121	HB4701	RESISTOR, FIXED, COMP	EA	1
4	7	PAHZZ	5905-00-994-8553	28480	0751-0374	RESISTOR, FIXED, FILM	EA	2
4	8	PAHZZ	5905-00-927-2876	28480	0757-0313	RESISTOR, FIXED, FILM	EA	1
4	9	PAHZZ	5905-00-927-2878	28480	0757-0772	RESISTOR, FIXED, FILM	EA	1
4	10	PAHZZ	5905-00-828-6820	28480	0757-0156	RESISTOR, FIXED, FILM	EA	1
4	11	PAHZZ	5905-00-057-8468	28480	0757-0854	RESISTOR, FIXED, FILM	EA	1
4	12	PAHZZ	5905-00-676-8924	28480	0730-0101	RESISTOR, FIXED, FILM	EA	1
4	13	PAHZZ	5905-00-057-8490	28480	0757-0872	RESISTOR, FIXED, FILM	EA	1
4	14	PAHZZ	5905-00-057-8464	28480	0757-0789	RESISTOR, FIXED, FILM	EA	1
4	15	PAHZZ	5905-00-057-8460	28480	0757-0777	RESISTOR, FIXED, FILM	EA	1
4	16	PAHZZ	5905-00-050-7071	28480	2100-1472	RESISTOR, VARIABLE, N	EA	1
4	17	PAHZZ	5905-00-856-9958	28480	0757-0792	RESISTOR, FIXED, FILM	EA	1
4	18	PAHZZ	5905-00-722-0050	28480	0777-0002	RESISTOR, FIXED, FILM	EA	1
4	19	PAHZZ	5905-00-722-0053	28480	0771-0007	RESISTOR, FIXED, FILM	EA	1
4	20	PAHZZ	5905-00-930-7956	28480	0757-0367	RESISTOR, FIXED, FILM	EA	1
4	21	PAHZZ	5905-00-981-2588	28480	0757-0871	RESISTOR, FIXED, FILM	EA	1
4	22	PAHZZ	5905-00-172-0854	28480	0698-6303	RESISTOR, FIXED, FILM	EA	1
4	23	PAHZZ	5960-00-269-3691	28480	1923-0071	ELECTRON TUBE	EA	1
4	24	PAHZZ	5960-00-262-0286	81349	5651WA	ELECTRON TUBE	EA	1
4	25	PAHZZ	5960-00-967-1083	80131	6EJ7	ELECTRON TUBE	EA	1
4	26	PAHZZ	5960-00-557-6780	81349	6C4WA	ELECTRON TUBE	EA	1

LEGEND

REF DES	ITEM NO
CR601	1
CR602	2
Q601	3
Q602	3
Q603	4
R603	5
R604	6
R605	6
R606	7
R607	8
R608	9
R609	10
R610	11
R611	12
R612	13



PREFIX ALL REFERENCE
DESIGNATORS WITH A600

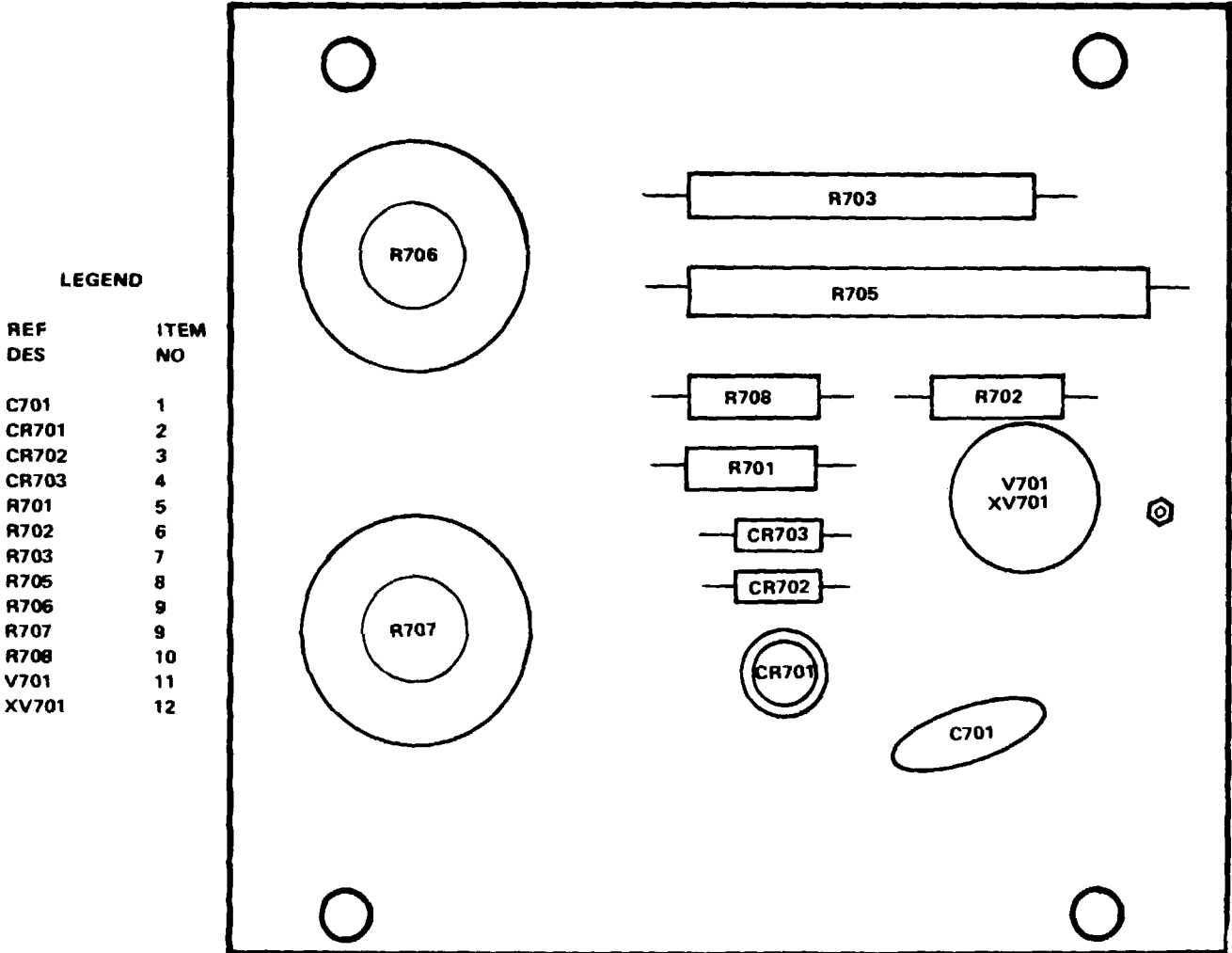
EL5GHO19

Figure 5. Circuit Card Assembly, Power Monitor Amplifier, A600.

SECTION II

TM 11-6625-2520-24P-1

(1) ILLUSTRATION		(2)	(3)	(4)	(5)	(6)	(7)	(8)
(a) FIG NO.	(b) ITEM NO.	SMR CODE	NATIONAL STOCK NUMBER	FSCM	PART NUMBER	DESCRIPTION USABLE ON CODE	U/M UNIT	QTY INC IN
						GROUP 04 CIRCUIT CARD ASSEMBLY, POWER MONITOR AHPLIFLER, A600		
5	1	XDHZZ		28480	1902-0041	SEMICONDUCTOR DEVIC	EA	1
5	2	PAHZZ	5961-00-978-7468	28480	1901-0025	SEMICONDUCTOR DEVIC	EA	1
5	3	PAHZZ	5961-00-836-1887	28480	1854-0221	SEMICONDUCTOR DEVIC	EA	2
5	4	PAHZZ	5961-00-990-5369	28480	1854-0003	TRANSISTOR.....	EA	1
5	5	PAHZZ	5905-00-917-0578	28480	0757-0427	RESISTOR, FIXED, FILM	EA	1
5	6	XDHZZ		28480	0757-0437	RESISTOR, FIXED, FILM	EA	2
5	7	PAHZZ	5905-00-990-0303	28480	0757-0439	RESISTOR, FIXED, FILM	EA	1
5	8	PAHZZ	5905-00-981-7478	28480	0757-0451	RESISTOR, FIXED, FILM	EA	1
5	9	PAHZZ	5905-00-994-8537	28480	0757-0352	RESISTOR, FIXED, FILM	EA	1
5	10	XDHZZ		28480	0757-0449	RESISTOR, FIXED, FILM	EA	1
5	11	XDHZZ	5905-00-994-8542	28480	0757-0862	RESISTOR, FIXED, FILM	EA	1
5	12	PAHZZ	5905-00-057-8495	28480	0757-0861	RESISTOR, FIXED, FILM	EA	1
5	13	PAHZZ	5905-00-891-4221	28480	2100-0898	RESISTOR, VARIABLE, W	EA	1



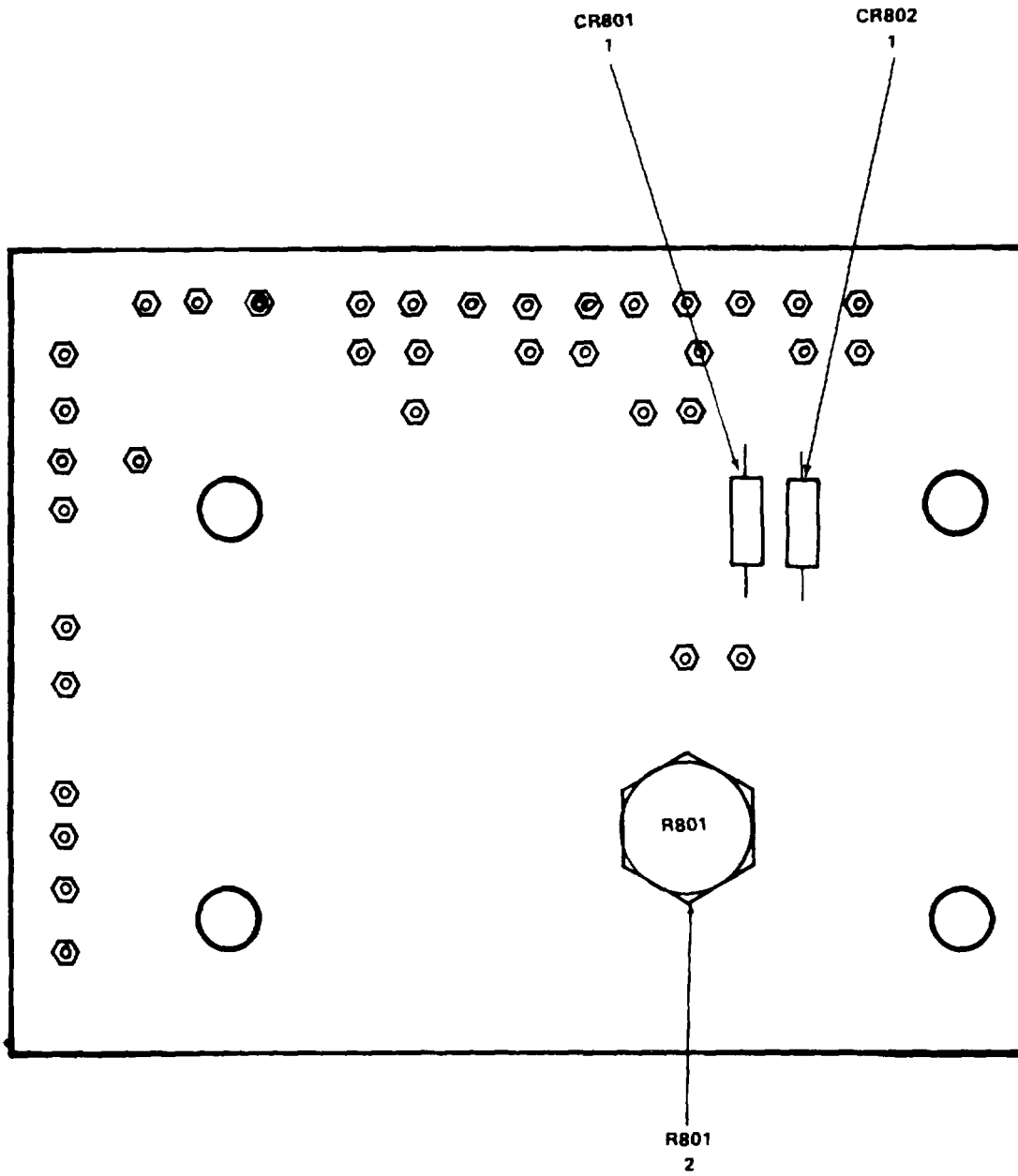
PREFIX ALL REFERENCE
DESIGNATORS WITH A700

Figure 6. Circuit Card Assembly, Klystron Modulator, A700.

SECTION II

TM 11-6625-2520-24P-1

(1) ILLUSTRATION		(2)	(3)	(4)	(5)	(6) DESCRIPTION	(7)	(8)
(a) FIG NO.	(b) ITEM NO.	SMR CODE	NATIONAL STOCK NUMBER	FSCM	PART NUMBER	USABLE ON CODE	U/M	QTY INC IN UNIT
						GROUP 05 CIRCUIT CARD ASSEMBLY, KLYSTRON MODULATOR, A700		
6	1	PAHZZ	5910-00-854-7130	28480	0160-0265	CAPACITOR, FIXED, CER	EA	1
6	2	PAHZZ	5961-00-931-0286	28480	1902-0241	SEMICONDUCTOR DEVIC	EA	1
6	3	PAHZZ	5961-00-060-8638	28480	1901-0026	SEMICONDUCTOR DEVIC	EA	1
6	4	PAHZZ	5961-00-406-4327	28480	1901-0059	SEMICONDUCTOR DEVIC	EA	1
6	5	PAHZZ	5905-00-932-6822	28480	0757-0139	RESISTOR, FIXED, FILM	EA	1
6	6	PAHZZ	5905-00-994-8544	28480	0757-0863	RESISTOR, FIXED, FILM	EA	1
6	7	PAHZZ	5905-00-715-0771	28480	0771-0005	RESISTOR, FIXED, FILM	EA	1
6	8	PAHZZ	5905-00-722-0050	28480	0777-0002	RESISTOR, FIXED, FILM	EA	1
6	9	PAHZZ	5905-00-172-0856	28480	2100-2154	RESISTOR, VARIABLE, N	EA	2
6	10	PAHZZ	5905-00-994-8548	28480	0757-0133	RESISTOR, FIXED, FILM	EA	1
6	11	PAHZZ	5960-00-074-8968	28480	1921-0041	ELECTRON TUBE	EA	1
6	12	PAHZZ	5935-00-782-8388	28480	1200-0086	SOCKET, PLUG-IN ELEC	EA	1
					19			



PREFIX ALL REFERENCE
DESIGNATORS WITH A800

EL5GH021

Figure 7. Circuit Card Assembly, Interconnection, A800.

SECTION II

TM 11-6625-2520-24P-1

(1) ILLUSTRATION		(2)	(3)	(4)	(5)	(6)	(7)	(8)
(a) FIG NO.	(b) ITEM NO.	SMR CODE	NATIONAL STOCK NUMBER	FSCM	PART NUMBER	DESCRIPTION USABLE ON CODE	U/M	QTY INC IN UNIT
7	1	PAHZZ	5961-00-060-8638	28480	1901-0026	GROUP 06 CIRCUIT CARD ASSEMBLY, INTERCONNECTION, A800		
7	2	PAHZZ	5905-00-950-2798	28480	2100-0308	SEMICONDUCTOR DEVIC	EA	2
						RESISTOR, VARIABLE, W	EA	1
					21			

NATIONAL STOCK NUMBER AND PART NUMBER INDEX

NOTE: LASTEST NATIONAL STOCK NUMBER ASSIGNMENTS ARE INCLUDED AT END OF INDEX.

STOCK NUMBER	FIGURE NO.	ITEM NO.	STOCK NUMBER	FIGURE NO.	ITEM NO.
5905-00-005-2867	1	63	5905-00-477-2199	1	77
5910-00-034-1270	1	53	6130-00-490-8891	1	40
5910-00-034-1848	1	112	6130-00-490-8934	1	38
5935-00-042-4671	1	83	5961-00-494-5023	3	3
5905-00-050-6962	1	61	5915-00-501-2674	1	123
5905-00-050-7071	3	14	5905-00-539-3205	4	6
5905-00-050-7071	4	16	5910-00-549-2428	1	127
5950-00-056-0131	1	29	5960-00-552-0082	1	25
5905-00-057-8457	2	9	5960-00-557-6780	3	22
5905-00-057-8460	2	17	5960-00-557-6780	4	26
5905-00-057-8460	3	16	5930-00-593-5145	1	100
5905-00-057-8460	4	15	5930-00-593-5151	1	97
5905-00-057-8464	2	7	5960-00-615-5584	1	35
5905-00-057-8464	3	12	5960-00-624-4718	2	21
5905-00-057-8464	4	14	5905-00-632-5238	1	84
5905-00-057-8468	3	10	5910-00-666-8475	1	34
5905-00-057-8468	4	11	5910-00-668-9338	1	119
5905-00-057-8480	3	17	5905-00-676-8924	4	12
5905-00-057-8483	3	15	5910-00-681-9264	1	121
5905-00-057-8490	2	15	5905-00-715-0771	6	7
5905-00-057-8490	4	13	5905-00-722-0050	4	18
5905-00-057-8495	5	12	5905-00-722-0050	6	8
5935-00-058-9423	1	32	5905-00-722-0053	4	19
5961-00-060-8638	6	3	5905-00-752-6967	1	89
5961-00-060-8638	7	1	5905-00-759-8556	1	87
5905-00-072-0583	1	111	5910-00-781-9398	1	54
5930-00-072-0852	1	7	5935-00-782-8388	6	12
5960-00-074-8968	6	11	5915-00-793-0226	1	93
5910-00-082-7420	1	48	5905-00-794-3314	1	4
5910-00-082-7423	1	102	5910-00-797-4909	2	2
5905-00-082-7531	1	79	5910-00-797-4909	3	2
5910-00-087-3522	1	13	5910-00-797-4909	4	2
5910-00-087-6816	1	19	5910-00-797-9730	1	109
5960-00-088-6527	2	19	5935-00-808-9569	1	82
5905-00-104-8353	1	52	5910-00-817-7275	1	9
5905-00-111-6009	2	16	5935-00-819-6957	1	124
5905-00-111-8372	1	41	5935-00-823-9935	1	20
5905-00-133-0379	1	122	5935-00-824-7685	1	17
5960-00-134-6012	1	23	5905-00-828-6820	2	14
5960-00-134-9919	1	28	5905-00-828-6820	3	9
5995-00-139-5785	1	2	5905-00-828-6820	4	10
5995-00-139-5786	1	2	5995-00-828-9167	1	2
5995-00-139-5787	1	2	5905-00-829-2827	1	69
5905-00-141-1071	1	78	5905-00-830-6633	1	18
5905-00-152-8373	1	72	5905-00-835-8861	1	8
5905-00-156-0435	3	6	5961-00-836-1887	5	3
5905-00-172-0854	4	22	5960-00-841-2352	2	20
5905-00-172-0855	1	67	5905-00-841-6422	1	47
5905-00-172-0856	6	9	5905-00-849-1755	1	58
5905-00-184-7703	1	59	5935-00-849-9455	1	81
5920-00-199-9498	2	5	5935-00-850-6567	1	80
5920-00-199-9498	3	5	5910-00-851-7794	2	1
5905-00-222-6276	1	43	5910-00-851-7794	3	1
5905-00-228-6081	1	76	5910-00-851-7794	4	1
5905-00-235-3534	1	75	5910-00-854-7130	6	1
5905-00-244-7911	1	6	5905-00-856-8688	1	98
5905-00-247-8722	1	114	5905-00-856-9958	4	17
5905-00-247-8728	1	115	5905-00-887-0591	2	8
5905-00-247-8733	1	45	5905-00-891-4221	5	13
5905-00-247-8749	1	44	5920-00-898-0400	4	5
6625-00-250-4866	1	95	5910-00-901-8796	1	104
5935-00-259-2039	1	125	5961-00-904-0296	1	12
5935-00-259-2607	1	92	5910-00-910-5114	1	118
5960-00-262-0286	3	20	6240-00-912-5186	2	4
5960-00-262-0286	4	24	6240-00-912-5186	3	4
5960-00-269-3691	3	19	6240-00-912-5186	4	4
5950-00-269-3691	4	23	5905-00-917-0578	5	5
5905-00-279-2553	1	42	6625-00-918-0615	1	94
5905-00-394-1459	3	13	5930-00-918-4381	1	15
5910-00-397-1849	1	117	5910-00-919-3308	1	51
6625-00-406-4318	1	96	5905-00-919-8613	1	99
5910-00-406-4319	1	113	5961-00-921-3778	4	3
5961-00-406-4327	6	4	5905-00-927-2876	4	8
5905-00-422-4129	3	11	5905-00-927-2878	3	8
5905-00-469-2773	1	70	5905-00-927-2878	4	9
5905-00-469-2775	1	56	5905-00-930-7956	4	20
5905-00-469-2777	1	60	5905-00-930-7959	1	85
5905-00-469-2781	1	66	5961-00-931-0286	6	2
6625-00-476-2080	1	90	5910-00-931-1908	1	14
5905-00-476-5722	2	6	5905-00-932-6822	6	5

SECTION IV

TM 11-6625-2520-24P-1

NATIONAL STOCK NUMBER AND PART NUMBER INDEX

STOCK NUMBER	FIGURE NO.	ITEM NO.	STOCK NUMBER	FIGURE NO.	ITEM NO.
5910-00-938-1013	1	103	5905-00-990-0303	5	7
5935-00-948-9078	1	126	5961-00-990-5369	5	4
5961-00-950-0537	1	11	5905-00-994-8537	2	10
5961-00-950-0537	2	3	5905-00-994-8537	5	9
5905-00-950-2798	7	2	5905-00-994-8542	3	7
5960-00-950-3553	1	91	5905-00-994-8542	5	11
5905-00-954-8684	1	86	5905-00-994-8544	6	6
5960-00-967-1083	3	21	5905-00-994-8548	6	10
5960-00-967-1083	4	25	5905-00-994-8553	4	7
5930-00-977-1760	1	37	6150-00-995-9822	1	33
5961-00-978-7468	5	2	5905-00-998-1809	1	68
5905-00-981-2588	2	12	5905-00-998-1909	3	18
5905-00-981-2588	4	21	6625-00-998-6521	1	1
5905-00-981-2659	1	55	6625-00-998-6530	1	36
5905-00-981-7478	5	8	5920-01-028-5727	1	21
5910-00-985-1281	1	107	5930-01-090-7228	1	3

FSCM	PART NUMBER	FIGURE NO.	ITEM NO.	FSCM	PART NUMBER	FIGURE NO.	ITEM NO.
81349	CM15FD560G03	1	104	28480	0150-0052	3	2
81349	F02B250V1-2A	2	5	28480	0150-0052	4	2
81349	F02B250V1-2A	3	5	28480	0160-0081	1	34
81349	F02B250V3A	1	21	28480	0160-0088	1	27
01121	GB1241	1	58	28480	0160-0089	1	118
01121	GB4741	1	55	28480	0160-0090	1	117
01121	GB5641	1	61	28480	0160-0102	1	121
01121	HB1831	1	120	28480	0160-0265	6	1
01121	HB4701	4	6	28480	0170-0038	1	9
24446	K7886043REV5	1	92	28480	0180-0024	1	13
81312	M7PLSN	1	124	28480	0180-0042	1	19
00656	P30MT	1	119	28480	0180-0049	1	54
81349	RCR32G121JS	1	76	28480	0180-0128	1	14
81349	RCR32G184JS	1	122	28480	0360-0064	1	16
81349	RCR32G222JS	1	41	91662	04-730-02	1	83
81349	RCR32G271JS	1	114	28480	0618-625	1	10
81349	RCR32G392JS	1	115	28480	0687-1011	1	4
81349	RCR32G472JS	1	52	28480	0687-4741	1	78
81349	RCR32G562JS	1	45	28480	0690-1011	1	79
81349	RCR32G681JS	1	75	28480	0690-1021	1	62
81349	RCR32G682JS	1	6	28480	0690-1031	1	57
81349	RCR32G823JS	1	44	28480	0690-1041	1	70
81349	RCR32G824JS	2	16	28480	0690-1051	1	47
81349	RCR42G103JS	1	59	28480	0690-1221	1	42
81349	RCR42G153JS	1	63	28480	0690-1251	1	56
81349	RCR42G224JS	3	11	28480	0690-1541	1	77
81349	RCR42G273JS	1	72	28480	0690-2741	1	60
81349	RCR42G390JS	3	6	28480	0690-3911	2	8
81349	RCR42G823JS	1	87	28480	0690-4731	1	50
81349	RNC65K6192FS	1	84	28480	0693-3331	1	46
81349	OB2WA	2	21	28480	0693-4721	1	66
28480	00618-60095	1	40	28480	0693-4731	1	111
28480	00618-60096	1	39	28480	0693-6821	1	5
28480	00618-60097	1	38	28480	0698-3260	1	68
28480	00618-6058	1	30	28480	0698-6303	4	22
28480	00618-627	1	110	28480	0730-0101	4	12
28480	00618-628	1	96	28480	0757-0059	1	18
28480	00618-632	1	36	28480	0757-0123	1	86
28480	00620-6027	1	74	28480	0757-0131	2	11
28480	00620-624	1	90	28480	0757-0133	6	10
28480	0140-0001	1	103	28480	0757-0139	6	5
28480	0140-0005	1	64	28480	0757-0156	2	14
28480	0140-0008	1	51	28480	0757-0156	3	9
28480	0140-0009	1	108	28480	0757-0156	4	10
28480	0140-0015	1	49	28480	0757-0283	3	18
28480	0140-0017	1	48	28480	0757-0307	1	85
28480	0140-0018	1	107	28480	0157-0313	4	8
28480	0140-0020	1	127	28480	0757-0352	2	10
28480	0140-0021	1	73	28480	0757-0352	5	9
28480	0140-0023	1	112	28480	0757-0367	4	20
28480	0140-0024	1	109	28480	0757-0374	4	7
28480	0140-0027	1	102	28480	0757-0427	5	5
28480	0140-0054	1	53	28480	0757-0437	1	88
28480	0140-0114	1	113	28480	0757-0437	5	6
28480	0150-0012	2	1	28480	0757-0439	5	7
28480	0150-0012	3	1	28480	0757-0449	5	10
28480	0150-0012	4	1	28480	0757-0451	5	8
28480	0150-0052	2	2	28480	0757-0740	2	9

NATIONAL STOCK NUMBER AND PART NUMBER INDEX

FSCM	PART NUMBER	FIGURE NO.	ITEM NO.	FSCM	PART NUMBER	FIGURE NO.	ITEM NO.
28480	0757-0772	3	8	28480	1921-0014	2	19
28480	0757-0772	4	9	28480	1921-0041	6	11
28480	0751-0777	2	17	28480	1923-0071	3	19
28480	0757-0777	3	16	28480	1923-0071	4	23
28480	0757-0777	4	15	28480	1930-0013	1	28
28480	0757-0789	2	7	04404	1932-0030	2	20
28480	0757-0789	3	12	28480	1932-0045	1	35
28480	0757-0789	4	14	28480	1950-0017	1	91
28480	0757-0792	4	17	28480	2100-0025	1	22
28480	0757-0815	1	43	28480	2100-0028	1	65
28480	0757-0854	3	10	28480	2100-0029	1	71
28480	0757-0854	4	11	28480	2100-0045	1	89
28480	0757-0859	3	13	28480	2100-0047	1	69
28480	0757-0861	5	12	28480	2100-0051	1	98
28480	0757-0862	3	7	28480	2100-0059	1	99
28480	0757-0862	5	11	28480	2100-0127	1	8
28480	0757-0863	6	6	28480	2100-0308	7	2
28480	0757-0870	3	15	28480	2100-0465	1	67
28480	0757-0871	2	12	28480	2100-0898	5	13
28480	0757-0871	4	21	28480	2100-1472	3	14
28480	0757-0872	2	15	28480	2100-1472	4	16
28480	0757-0872	4	13	28480	2100-2154	6	9
28480	0757-1000	3	17	28480	2110-0012	4	5
28480	0771-0005	6	7	28480	2140-0047	2	4
28480	0771-0007	4	19	28480	2140-0047	3	4
28480	0777-0002	4	18	28480	2140-0047	4	4
28480	0777-0002	6	8	28480	3100-0075	1	100
28480	0811-0007	2	13	28480	3100-0076	1	97
28480	0812-0038	2	18	28480	3101-0033	1	37
28480	0813-0040	2	6	28480	3101-0100	1	15
28480	1120-1277	1	1	28480	3101-0107	1	3
28480	3102-0001	1	7				
28480	1200-0017	1	26	28480	3160-0058	1	31
28480	1200-0053	1	80	81349	5651WA	3	20
28480	1200-0058	1	81	81349	5651WA	4	24
28480	1200-0062	1	82	81349	5127	1	25
28480	1200-0086	6	12	81349	6C4WA	3	22
28480	1250-0144	1	17	81349	6C4WA	4	26
28480	1251-0148	1	32	80131	6EJ7	3	21
28480	1251-0194	1	126	80131	6EJ7	4	25
28480	1251-0234	1	20	28480	618B-27	1	93
28480	1251-1036	1	125	28480	618B-52	1	101
28480	1854-0003	5	4	28480	618B-75A	1	105
28480	1854-0221	5	3	28480	618B-75B	1	116
28480	1901-0025	5	2	28480	618B-75D	1	106
28480	1901-0026	6	3	28480	618B16S	1	2
28480	1901-0026	7	1	28480	618B16T	1	2
28480	1901-0029	1	11	28480	618B16U	1	2
28480	1901-0029	2	3	28480	618B16V	1	2
28480	1901-0036	4	3	81349	6189W	1	23
28480	1901-0059	6	4	28480	620A-28N	1	95
28480	1901-0096	1	12	28480	620A-34BB	1	94
28480	1901-0487	3	3	28480	8120-0078	1	33
28480	1902-0041	5	1	28480	9100-1703	1	29
28480	1902-0241	6	2	28480	9110-0014	1	123

LATEST PART NUMBER ASSIGNMENT

FSCM	PART NUMBER	FIGURE NO.	ITEM NO.
28480	1200-03	1	24

☆U, S. GOVERNMENT PRINTING OFFICE: 1983 0 - 381-302 (978)

RECOMMENDED CHANGES TO EQUIPMENT TECHNICAL PUBLICATIONS



THEN... JOT DOWN THE DOPE ABOUT IT ON THIS FORM, CAREFULLY TEAR IT OUT, FOLD IT AND DROP IT IN THE MAIL!

SOMETHING WRONG WITH THIS PUBLICATION?

FROM: (PRINT YOUR UNIT'S COMPLETE ADDRESS)

DATE SENT

PUBLICATION NUMBER

TM 11-5825-270-10

PUBLICATION DATE

23 Jul 81

PUBLICATION TITLE

Radio Frequency R-2176/FRN

BE EXACT... PIN-POINT WHERE IT IS

PAGE NO.

PARA-GRAPH

FIGURE NO.

TABLE NO.

IN THIS SPACE TELL WHAT IS WRONG AND WHAT SHOULD BE DONE ABOUT IT:

TEAR ALONG PERFORATED LINE

PRINTED NAME, GRADE OR TITLE, AND TELEPHONE NUMBER

SIGN HERE:

DA FORM 2028-2 JUL 79

PREVIOUS EDITIONS ARE OBSOLETE.

P.S.—IF YOUR OUTFIT WANTS TO KNOW ABOUT YOUR RECOMMENDATION MAKE A CARBON COPY OF THIS AND GIVE IT TO YOUR HEADQUARTERS.

By Order of the Secretary of the Army:

Official:

ROBERT M. JOYCE
Brigadier General, United States Army
The Adjutant General

E. C. MEYER
General, United States Army
Chief of Staff

Distribution:

To be distributed in accordance with Special List.

